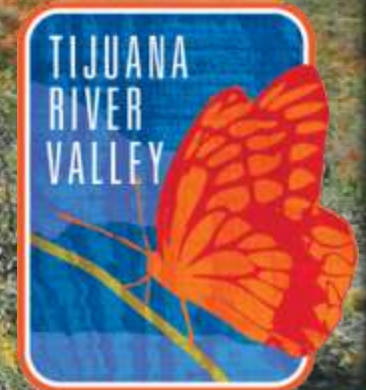


A Day in the Life at TRVVRP

2016 AEP State Conference • San Diego, California

10:30 AM – 12:00 PM – Coronado A
Earth, Water & Fire



REGIONAL SAN DIEGO
PARKS & RECREATION

Introductions

- Jennifer Price, Land Use Environmental Planner III
DPR – Resource Management
- Matthew Bohan, Chief of Operations
DPR - Operations
- David Norgard, Project Manager
DPR - Development
- Melanie Tylke, Land Use Environmental Planner II
DPR – Resource Management

Agenda

- Overview
 - Department of Parks and Recreation
 - Tijuana River Valley
- Balancing Recreation & Habitat Preservation within Tijuana River Valley Regional Park
 - Operations
 - Development
 - Resource Management

Department of Parks and Recreation

Vision:

A park and recreation system that is the pride of San Diego County

Mission:

We enhance the quality of life in San Diego County by providing exceptional parks and recreation experiences and preserving significant natural resources.

We accomplish this through the following:

- Increasing awareness of and appreciation for the “jewels of San Diego County”: preserves, regional parks, and river valleys.
- Improving the health of San Diego County – environmental, physical, mental, community, and economic.
- Sustaining a dynamic balance between passive and active recreation.

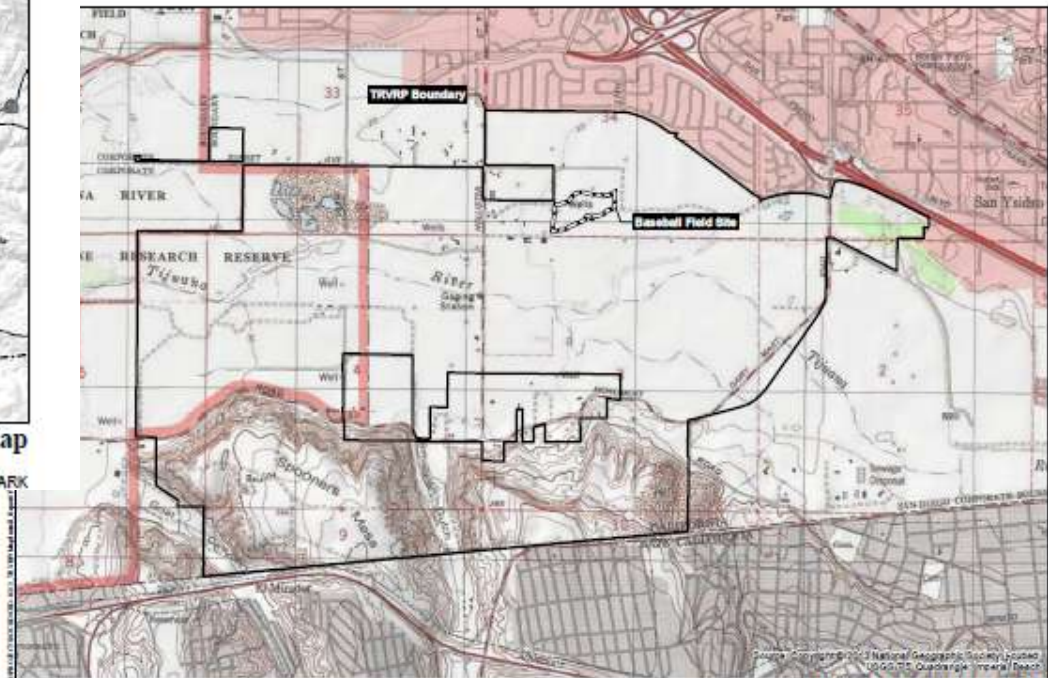


Location



Regional Location Map

TUJANA RIVER VALLEY REGIONAL PARK



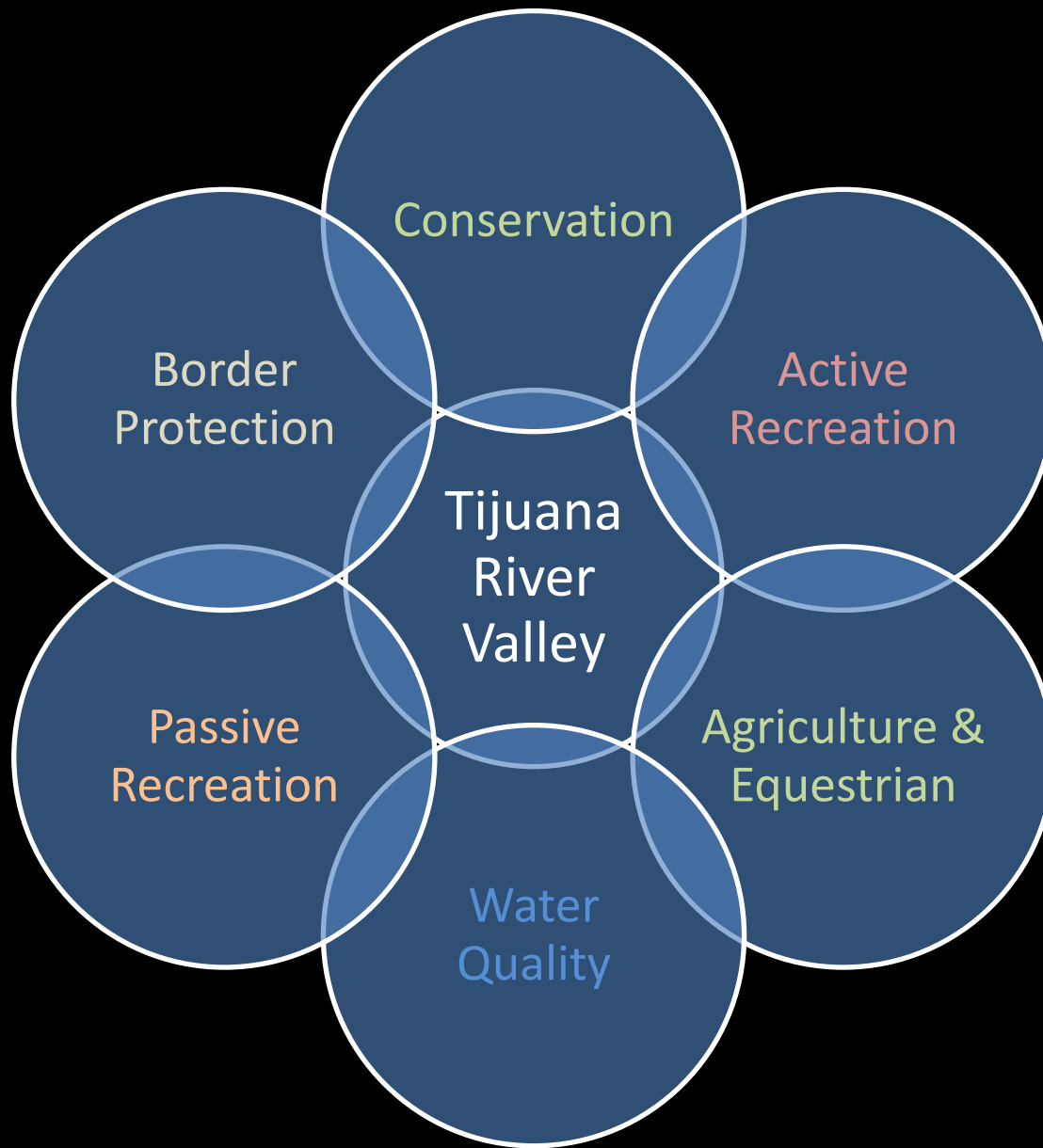
Project Vicinity Map

TUJANA RIVER VALLEY REGIONAL PARK

Multiple Entities & Interest Groups in Tijuana River Valley



Regional Interests within the Valley

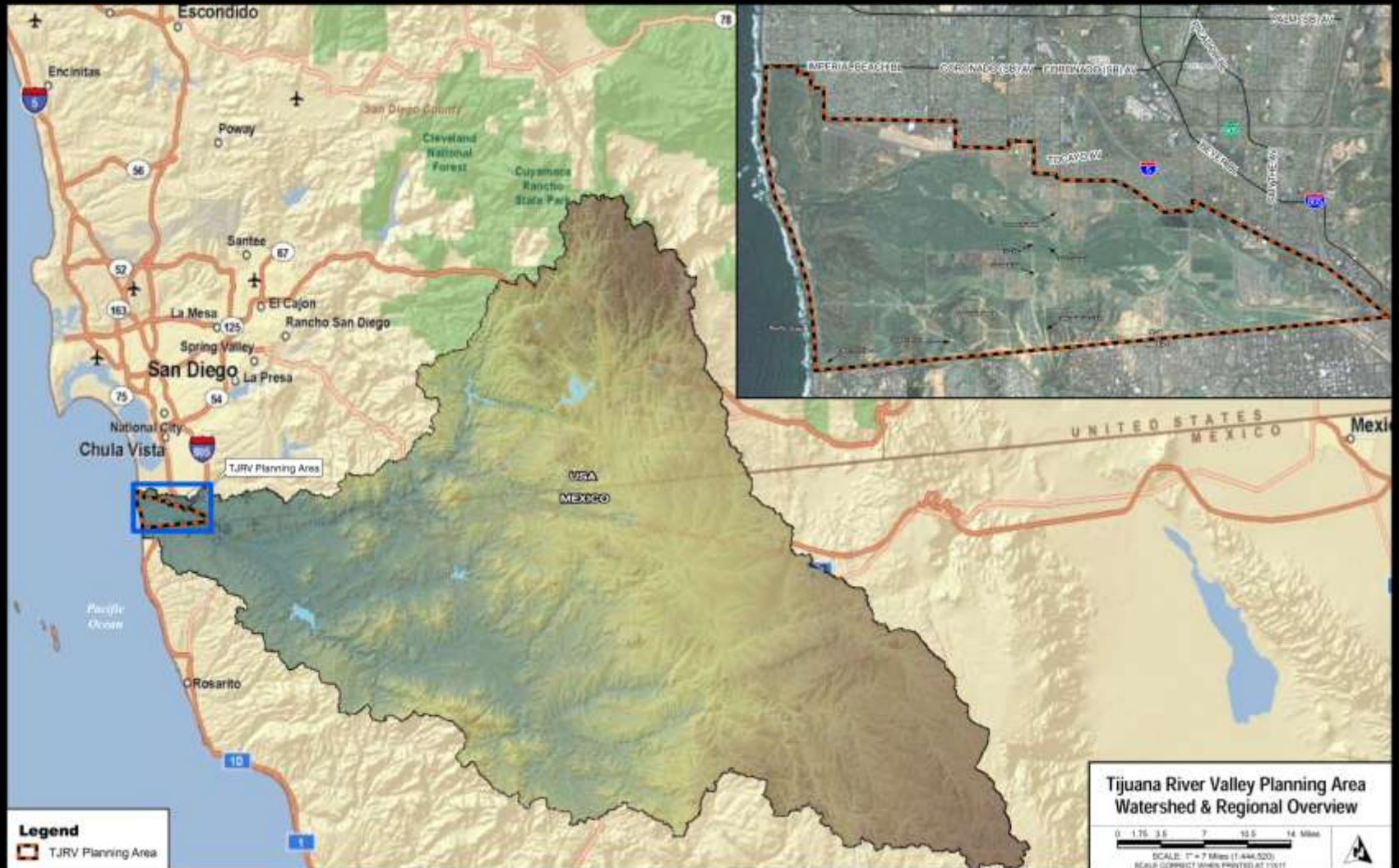


Challenges within Tijuana River Valley

- Multiple landowners
 - Variety of different visions, missions, roles and responsibilities
 - Combined desire to preserve habitat within the Valley
- Competing user & interest groups
- Flooding
 - Sedimentation and trash
- Illegal border crossings



Tijuana River Watershed



Regional Context



Tijuana River Valley Regional Park Promo

DPR Goals for TRVRP

- **Maintain approx. 2,000 acre regional park**
- **Preserve wetlands & natural habitat**
- **Balance active & passive recreation with habitat preservation**
- **Create a regional destination**
- **Continual coordination with federal, state and local agencies and non-profit organizations**



TRVRP Successes

- Preservation of natural resources
- Sustainable trail system
- Active and passive recreational opportunities
- Preservation of historical uses

Operations

Matt Bohan

Ball Fields

Features:

- five ball fields
- multi-use open turf area



Multi- Use Trail System



Community Garden

<https://www.youtube.com/watch?v=U3aeFBvfWz4>

Community Garden

- Connection with County health initiatives
- 138 plots
- Partnership with Resource Conservation District of Greater San Diego
- Model for other parks



Agriculture & Equestrian



Bird & Butterfly Garden

- Over 300 bird species
- Pacific Flyway
 - Spring, Summer and Winter



Endangered Species

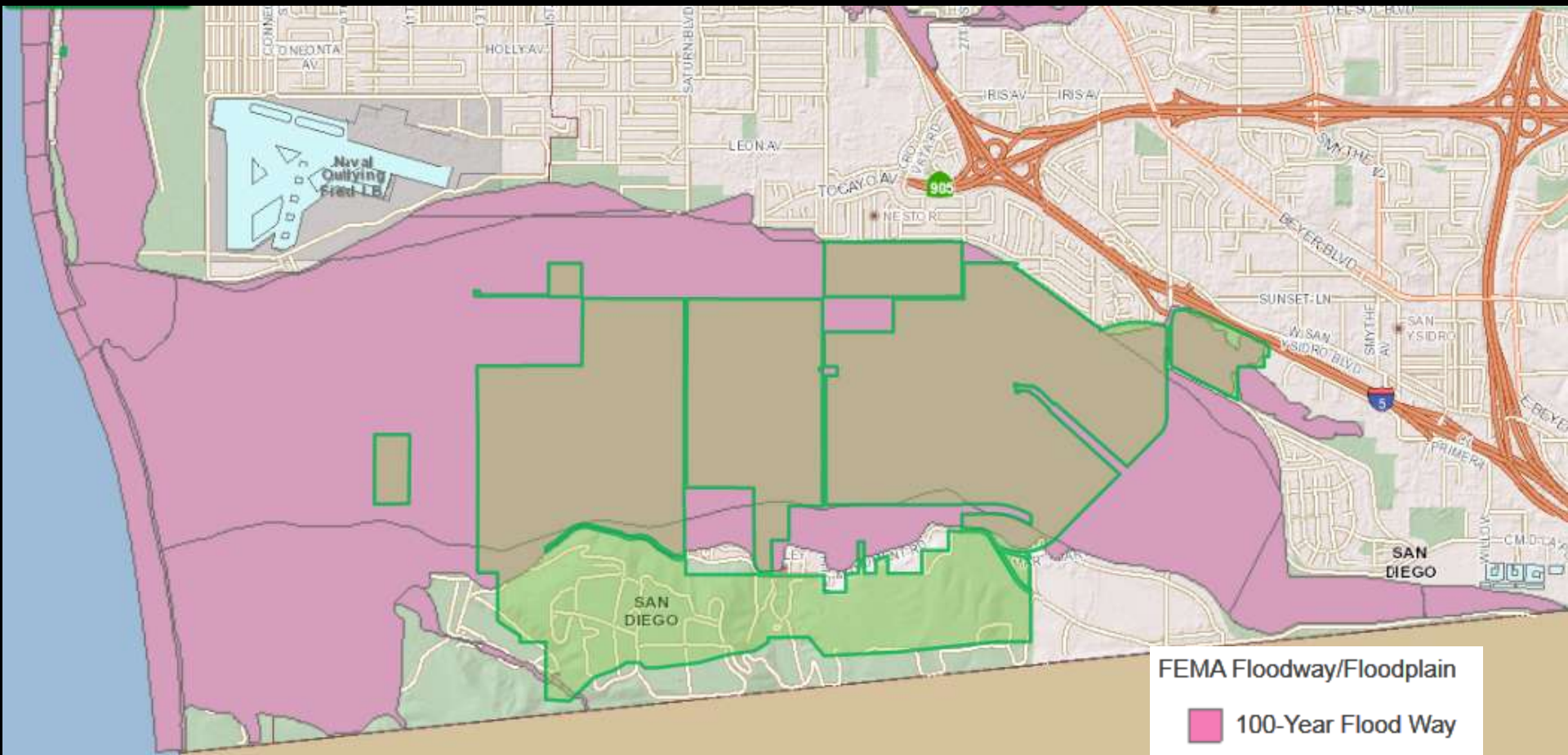
- Light-footed clapper (ridgeway's) rail
- southwestern willow flycatcher
- least Bell's vireo

Birding

least Bell's vireo, black-headed grosbeak, yellow warbler, American goldfinch, great-tailed grackle, osprey, terns, white-tailed kites, red-shouldered hawk, great horned owl, snowy egret, among others



Floodplain



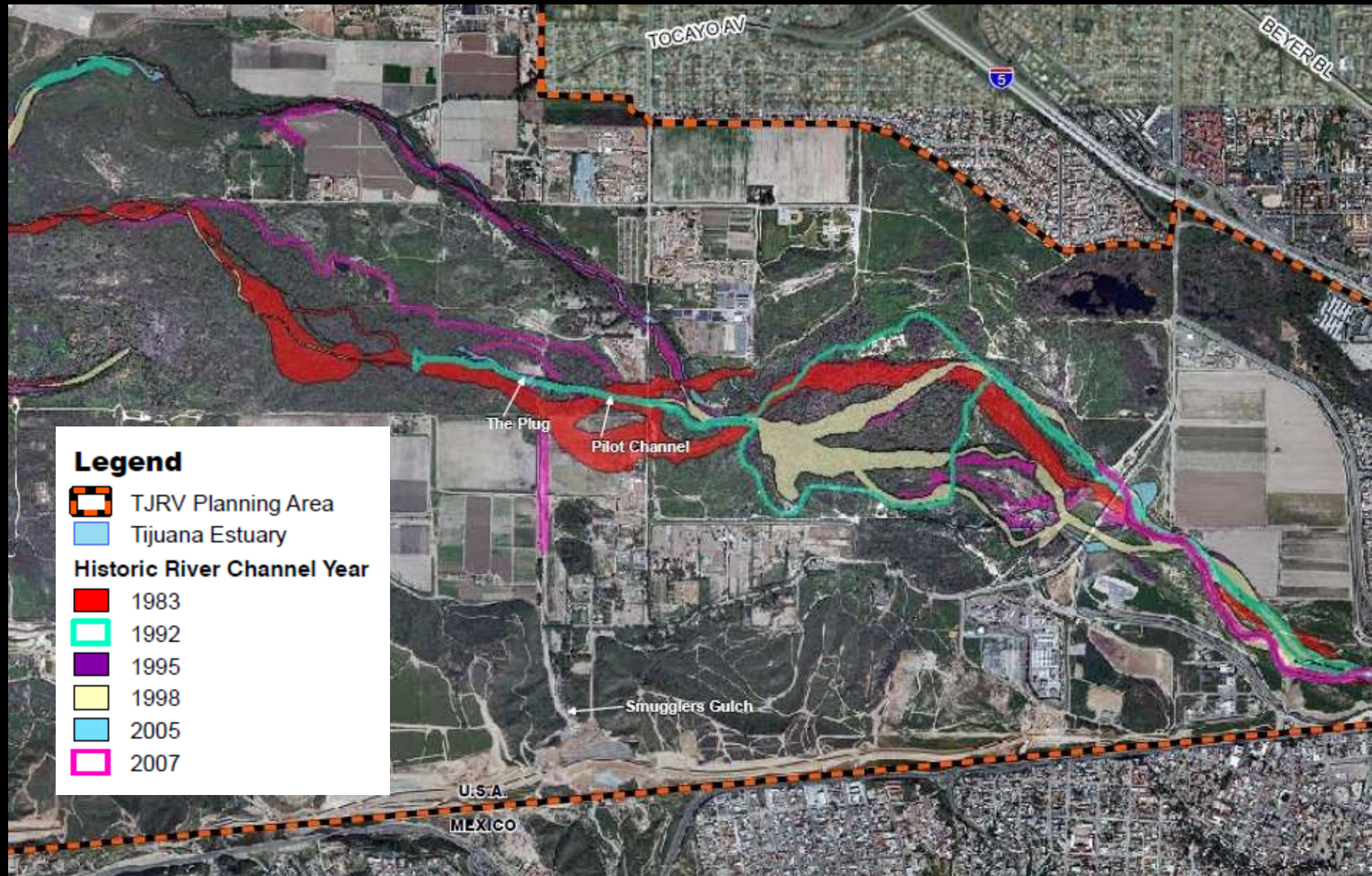
FEMA Floodway/Floodplain

100-Year Flood Way

100-Year Flood Plain

500-Year Flood Plain

Flooding



Smuggler's Gulch





Volunteer Collaboration





Tijuana River Action Network

**INVITES YOU
TO THE 6TH ANNUAL**

*Volunteer
and learn!*

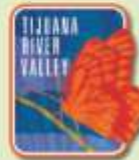
**SEPTEMBER 12
through
OCTOBER 17**

Tijuana River Action Month

A month-long series of education and stewardship events to benefit the Tijuana River watershed.

<p>SEP. 12 Invasive Plant Removal <i>Brookside Friendship Garden</i></p> <p>SEP. 12-13 Gathering Space Build Days <i>Brookside Friendship Garden</i></p> <p>SEP. 19 Coastal Cleanup Day <i>• Build sand dune events • Pottery from water Community Center event • Youth Day Workshops at Brookside Friendship Garden</i></p>	<p>SEP. 26 National Public Lands Day <i>• Pottery at Suberthys Center and cleanup events • Pottery from water Community Center event</i></p> <p>OCT. 3 & OCT. 10 Cleanup and Plant Removal <i>• In addition to cleanup events • Knowledge garden at Brookside Friendship Garden</i></p> <p>OCT. 17 Cleanup and Bilingual Celebration <i>• Cleanup and invasive plant removal events • Cross-border Volunteer Appreciation Pottery</i></p>
--	---

FOR DETAILS AND REGISTRATION:
WWW.TJRIVERACTION.NET



CLEAN THE RIVER HABITAT ENHANCEMENT EVENT Tijuana River Valley Regional Park

Saturday, April 23
9 a.m. – 12 p.m.

2310 Hollister St.
San Diego, CA 92154

(at the intersection of Hollister and Sunset)

**ALL
AGES
WELCOME**

When you clean locally, you're acting globally... Help us protect more than 1,800 acres of open space preserve in San Diego's south county. Open from dawn to dusk, Tijuana River Valley Regional Park is part of the Pacific Flyway which provides habitat for 340 species of birds and features more than 20 miles of multi-use trails – taking visitors from dense riparian forests along the Tijuana River to coastal maritime sage scrub at the top of Spooner's Mesa.

Clean-up locations have been identified to suit all abilities, and to cater to all group sizes.

Water and healthy snacks will be provided along with gloves, buckets and trash bags. Please wear sunscreen, long pants and sturdy shoes.

For more information, or to volunteer for this event, contact the Ranger Station at 619-428-2946 or visit sdparks.org.



**COUNTY OF SAN DIEGO
PARKS & RECREATION**

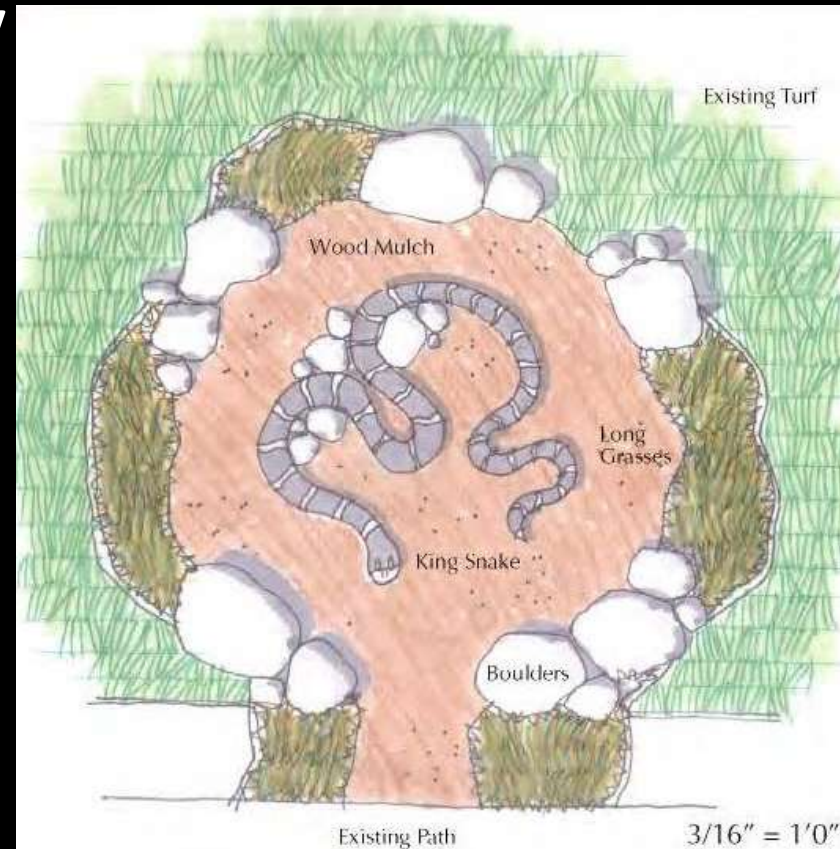
Development

David Norgard

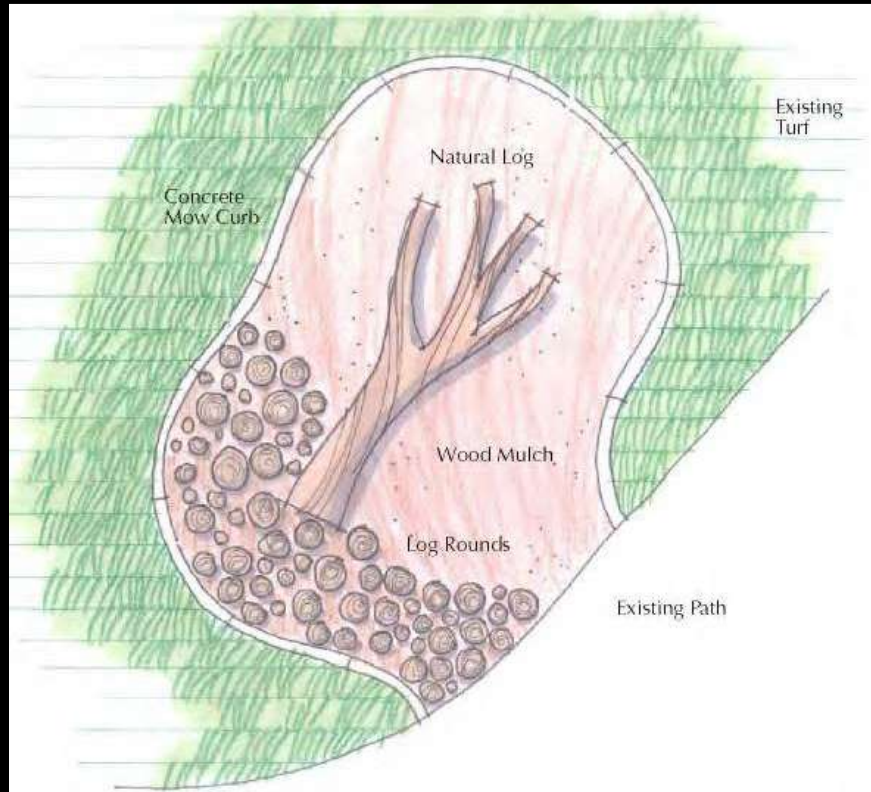
Nature Based Play

Considerations for Nature Based Play

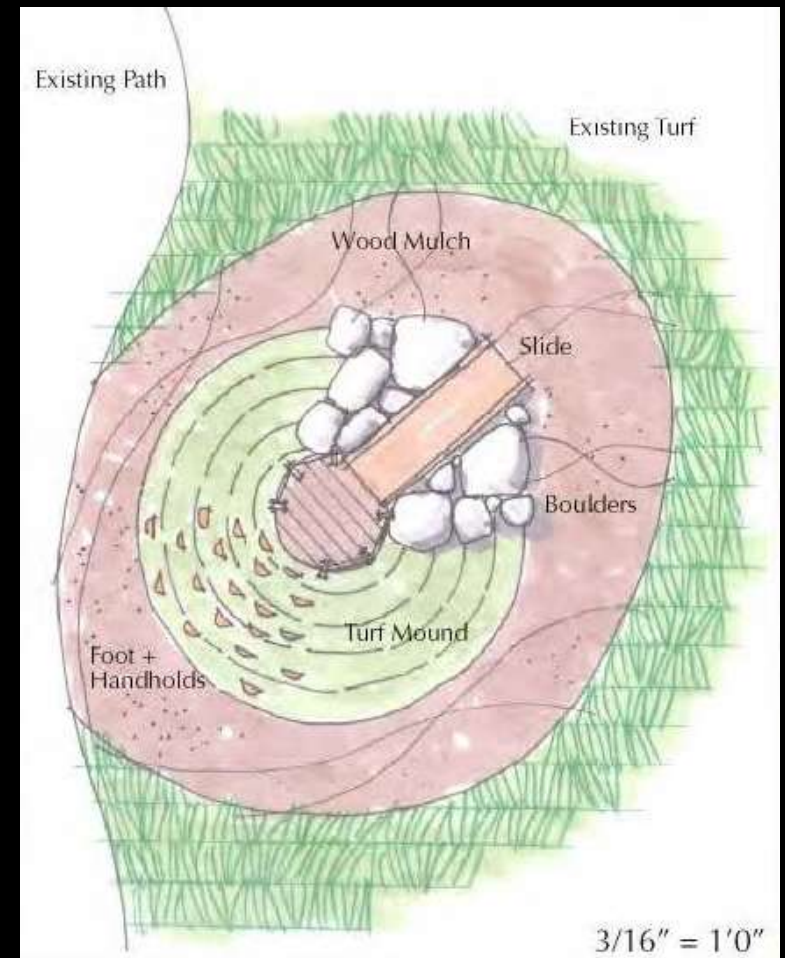
- 1-5 year age group
- Connect children to the outdoors
- Dispersed along a pathway to engage whole family
- Meaningful destinations
- Appropriate risk taking and challenge



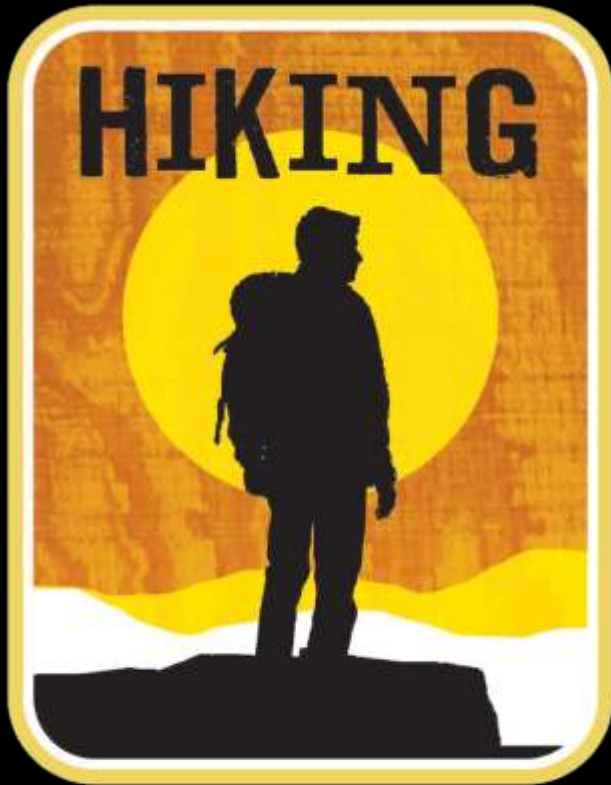
Nature Based Play



Nature Based Play



Multi-Use Trails



COUNTY OF SAN DIEGO
PARKS & RECREATION

- Decade long process
- 22.5 miles recently completed Winter 2016
- Numerous funding sources, over \$9 million
- Utilized California Conservation Corps Crews (CCC's)

Trail Construction



geotextile fabric, 3" minus rock



Class II Base, wood headers



D.G. surface

Raised Trail Section allows sheet flow under trail









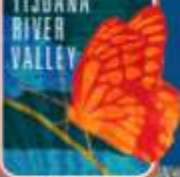
TIJUANA RIVER VALLEY REGIONAL PARK



- Park Boundary
- Equestrian, Pedestrian & Bicyclist Trail
- Equestrian & Pedestrian Trail
- You Are Here
- Information Kiosk
- Parking Area
- Ranger Station
- Restroom
- North

TIJUANA RIVER WATERSHED

TIJUANA
RIVER
VALLEY



The Tijuana River Watershed is a binational watershed that covers 1,750 square miles (4,465 square km) from the Laguna Mountains in the U.S. to the Sierra de Juárez Mountains in northern Mexico. Rain that falls within the watershed makes its way through rivers and streams all the way to the Pacific Ocean.

WHAT IS A WATERSHED?

"A watershed is the area of land that drains water, sediment and dissolved materials to a common outlet along a point in a stream or channel. Many ecological and human processes occur within a watershed, and contribute to the health (and economic benefits) of a watershed." (Dunne 1978)

PHYSICAL CHARACTERISTICS

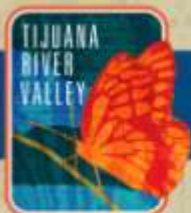
- Major tributaries: Tijuana River, Cottonwood Creek and the Rio Las Palmas system.
- Topography: Steep hilly terrain
- Climate: Mediterranean, 45°F to 65°F
- Precipitation: 10 inches of rain per year, the mountains 25 inches
- Vegetation: dominated by chaparral and coastal sage scrub, along with wetlands (vernal pools and riparian zones) and conifers in the mountains



A HEALTHY WATERSHED

A healthy watershed supports diversity of life and the environment. The Tijuana River Watershed is currently facing pressures from population growth, pollution and sediment that are carried downstream.

Agencies and groups on both sides of the border are working to improve the health of the watershed by reducing pollution, restoring habitat and removing sedimentation.



TIJUANA RIVER VALLEY REGIONAL PARK

Tijuana River Valley Regional Park supports a wide range of bird species from across the Americas.



MIGRATION - PACIFIC FLYWAY

More than 370 species of migratory and native birds stop over at the Tijuana River Valley Regional Park for breeding, feeding and nesting. Every year at almost the same time, different species of birds travel thousands of miles across the Americas, from Northern in Alaska to the South in Patagonia. There are key spots where many of these species stop, one of these spots is the Tijuana River Valley Regional Park.



BELTED KINGFISHER

Ceryle alcyon

HABITAT

They live near rivers, lakes and estuaries.

FUN FACT

Belted Kingfishers dive head first into the water to catch their prey.

DIET

They feed on fish and small crustaceans.



HOODED ORIOLE

Icterus cucullatus

HABITAT

They live in many diverse locations, from desert oasis to highly urban areas.

FUN FACT

Hooded Oriole's build hanging basket-like nests from long plant leaf fibers.

DIET

They eat spiders, insects, nectar and fruit.



LONG-BILLED CURLEW

Numenius americanus

HABITAT

They live in coastal wetlands, estuaries and occasionally beaches.

FUN FACT

The Long-Billed Curlew is North America's largest shore bird.

DIET

They eat insects, marine crustaceans and mud-dwelling invertebrates.



WESTERN GREBE

Aechmophorus occidentalis

HABITAT

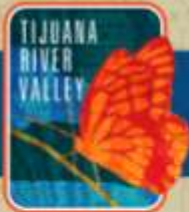
They spend most of their time floating on lakes and ponds.

FUN FACT

Western Grebe's spear their prey with their sharp beak.

DIET

They mainly eat fish and bottom-dwelling crustaceans and worms.



TIJUANA RIVER VALLEY REGIONAL PARK

The Least Bell's Vireo is an important species in the Tijuana River Valley Regional Park. While sensitive to many of the pressures of urbanization, the Least Bell's Vireo returns each year for breeding, feeding and nesting.

LEAST BELL'S VIREO

Vireo bellii pusillus

HABITAT

Least Bell's Vireo lives in riparian areas, brushy fields and young forests.

FUN FACT

Vireos have not been observed drinking water. They might get all that it needs from the food it consumes.

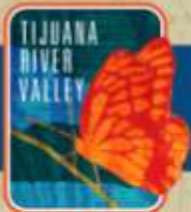
DIET

They prey on a variety of insects, beetles, grasshoppers, moths, and caterpillars.

The Least Bell's Vireo was listed as an endangered species by the U.S. Fish and Wildlife Service in 1986.

At that time it is estimated that only a few hundred pairs were in existence. Least Bell's Vireo habitat had been lost or severely impacted by stream channelization, urbanization, and the introduction of invasive species. Since that time efforts to stop the loss and to restore riparian habitats, fed by rivers and streams, have increased the population more than 10 fold.





TIJUANA RIVER VALLEY REGIONAL PARK

Tijuana River Valley Regional Park supports a wide range of native wildlife species from invertebrates to large mammals.

TREE SPECIES

FREMONT'S COTTONWOOD

Populus fremontii

HABITAT

Cottonwood is a native tree growing in riparian areas near streams rivers and wetlands in the American Southwest.



MAMMALS

COTTONTAIL RABBIT

Sylvilagus floridanus

HABITAT

These rabbits live in grassy fields and woodland edges.

FUN FACT

Cottontail rabbits are almost completely mute animals. They communicate with each other by thumping with their back feet against the ground.

DIET

Cottontail rabbits are herbivores. They eat a variety of plants, grasses, fruits and vegetables. In winter they eat the twigs and bark of trees.



BIRDS / RAPTORS

RED-SHOULDERED HAWK

Buteo lineatus

HABITAT

These hawks live in flooded deciduous swamps, in bottomland hardwood stands, and oak woodlands.

FUN FACT

Red-shouldered hawks usually return to the same nesting area. One red-shouldered hawk occupied a territory in southern California for 16 consecutive years.

DIET

These hawks hunt prey ranging from small mammals, to amphibians and reptiles.



WATER BIRD

RUDDY DUCK

Oxyura jamaicensis

HABITAT

These ducks live in marshes adjacent to lakes and ponds.

FUN FACT

Male Ruddy ducks have a rust-red body, a blue bill a white face with a black cap while adult females have a grey-brown body with a greyish face and a darker bill.

DIET

Ruddy ducks dive to feed on aquatic invertebrates.





TIJUANA RIVER VALLEY REGIONAL PARK

Enhancement of the Sports Complex site provides native habitat and restoration of previously disturbed areas.

RESTORATION AT THE TIJUANA RIVER VALLEY REGIONAL PARK SPORTS COMPLEX

The Baseball Fields site enhancement area comprises 12 acres of riparian scrub and associated upland habitat, including planting and seeding of 3 acres of riparian scrub and open riparian scrub habitat. The primary goal of this restoration effort consists of expanding native habitat into disturbed areas through active planting and seeding of native species as well as improving the quality of existing habitat through the removal of non-native vegetation.

More than 30 pounds of seed were applied by hand to riparian scrub and upland areas and 2,107 container plants were installed.

Revegetation was initiated in November, 2014.



BEFORE 1



BEFORE 2



DURING 3



DURING 4

***There are no after images.
It is still growing strong.***

The Sport Complex enhancement and restoration areas are progressing well thus far. The images to the left reflect the Before and During restoration conditions. There are no After images because the restoration is still growing and flourishing. Use the trail to view the progress so far and watch this environment change over time.

AFTER

Active Recreation Complex



64 Acre Site

Community amenities

- Dog park
- Court sports
- Open picnic community area
- Playgrounds
- Jog walk path

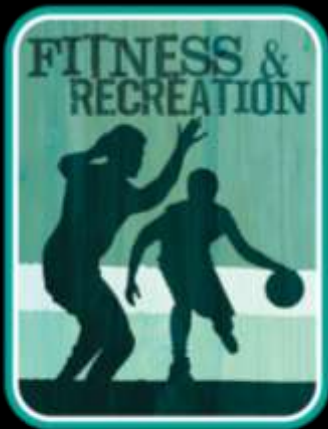
Tournament Level Regional Amenities

- 12 soccer fields
- 4 softball fields
- Multi-use, multi-level flexibility
- Synthetic turf, lighted fields



Feasibility Study

- Analyzing new recreation opportunities
- Community engagement/public workshops



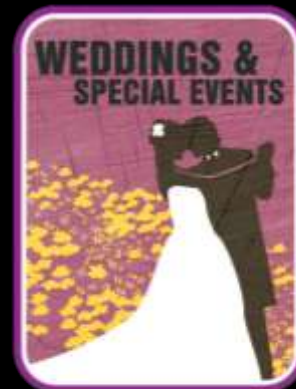
COUNTY OF SAN DIEGO
PARKS & RECREATION



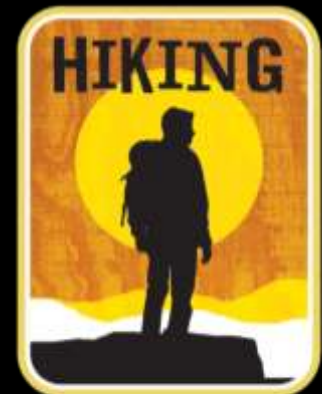
COUNTY OF SAN DIEGO
PARKS & RECREATION



COUNTY OF SAN DIEGO
PARKS & RECREATION



COUNTY OF SAN DIEGO
PARKS & RECREATION



COUNTY OF SAN DIEGO
PARKS & RECREATION

Equestrian Facility

- 15 acres
- Collaboration with Tijuana River Valley Equestrian Association
- Next Steps
 - Environmental
 - Public/private partnerships
 - Funding

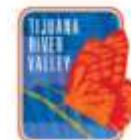


TIJUANA RIVER VALLEY REGIONAL PARK TRAILS AND HABITAT RESTORATION PROJECT

THIS 22 MILE TRAIL SYSTEM AND RELATED HABITAT RESTORATION WAS
ONLY POSSIBLE THROUGH THE GENEROSITY OF OUR AGENCY PARTNERS!



OPERATED AND MAINTAINED BY
COUNTY OF SAN DIEGO PARKS AND RECREATION



Resource Management

Melanie Tylke



**Habitat
Enhancement
Area**

Habitat Restoration



Restoration Areas

TUJUNA RIVER VALLEY REGIONAL PARK RESTORATION

Habitat Restoration









Trail Restoration

- Over 30 acres of trail are being restored
 - EIR mitigation requirement to revegetate informal trails and dirt roads
- Coordination with Trail Users
 - Border Patrol, TRVEA, & SDMBA

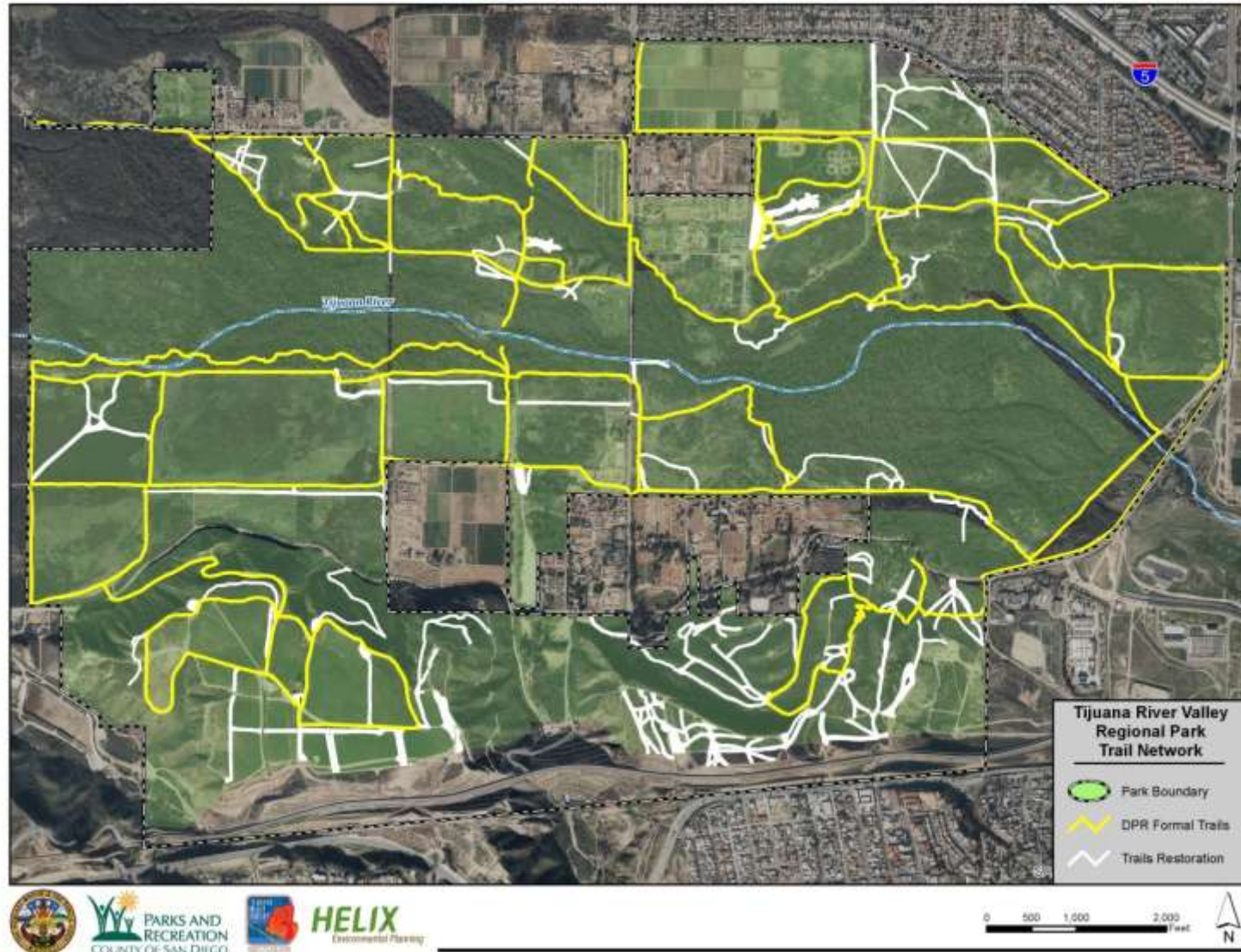








Trail Restoration



Successful Coordination



- Early & On-Going Coordination
- Strong Relationships with leadership
- Transparency
- Shared End Goals

Positive Outlooks = Positive Experiences

Lessons Learned



- Early and on-going collaboration and coordination
- Active Engagement
 - Vision of a Multi-Use Park
 - Trails & Restoration EIR
 - Balanced Implementation

Thank You



- Matthew Bohan, Chief of Operations
Matthew.Bohan@sdcounty.ca.gov
- Jennifer Price, Land Use Environmental Planner III
Jennifer.Price@sdcounty.ca.gov
- David Norgard, Project Manager
David.Norgard@sdcounty.ca.gov
- Melanie Tylke, Land Use Environmental Planner II
Melanie.Tylke@sdcounty.ca.gov
- Mike Verderber, Senior Park Ranger
Mike.Verderber@sdcounty.ca.gov

Back-Up Slides

Bird Watching in San Diego County

<https://www.youtube.com/watch?v=Z56k4-MDTmY>









Funding Sources 22-mile TRVRP Trail System

Work Task / Project	Status	Total	Individual Funding Sources						
			CA Wildlife Conservation Board	CA Natural Resources Agency (Prop 84 River Parkways)	State Coastal Conservancy	CA Conservation Corps (Prop 84)	CA Parks (LWCF)	County of San Diego (Federal Settlement Funds)	County of San Diego (General Funds)
Project EIR	Complete	\$1,000,000			\$1,000,000				
Construction Docs	Complete	\$ 250,000							\$250,000
Dairy Mart Ponds Overlook	Design Phase	\$ 200,000					\$100,000		\$100,000
Dairy Mart Ponds Loop	Complete	\$ 450,000				\$300,000			\$150,000
North East Trail Connection	Under Construction	\$ 480,000			\$ 450,000				\$ 30,000
Interpretive Trail Loop	Under Construction	\$ 662,999		\$611,250					\$ 51,749
South West Trails Construction	Under Construction	\$1,980,000			\$1,500,000			\$ 480,000	
Mesa Trails	Under Construction	\$2,178,912	\$1,199,999				\$858,913	\$ 120,000	
Settlement Trails	Under Construction	\$1,900,000						\$1,900,000	
TOTAL		\$9,131,911	\$1,368,363	\$611,250	\$2,950,000	\$300,000	\$958,913	\$2,500,000	\$ 611,749