

WHAT'S IN THE FUTURE FOR BORDER TRANSPORTATION?

Charles “Muggs” Stoll, SANDAG

Association of Environmental Professionals
Cities in Transition – Borders in Transition Panel
April 4, 2016

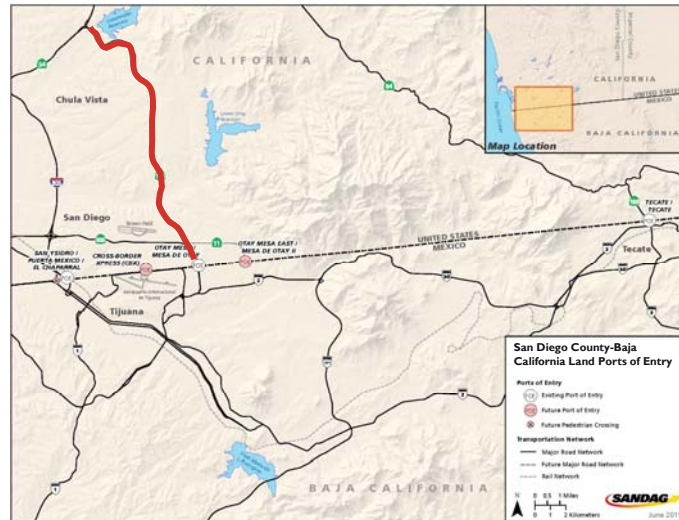


OVERVIEW

- Highlighting our border region's success
 - Completed Border Projects
 - Projects Under Construction
 - Projects Under Development
- Otay Mesa East Port of Entry

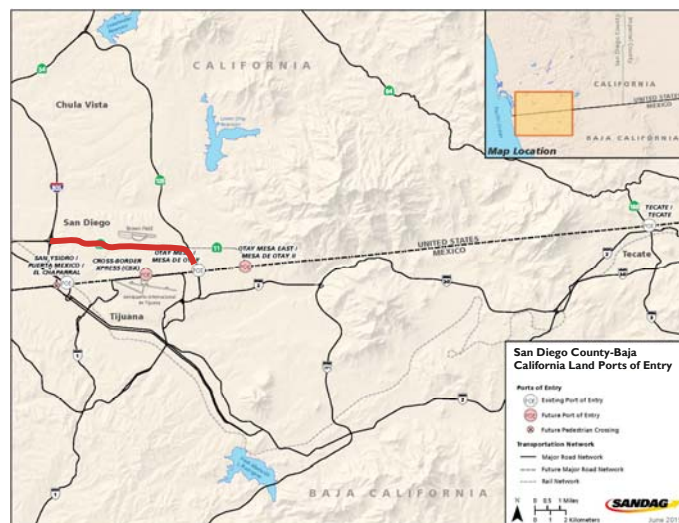


COMPLETED PROJECTS: SR 125



3

COMPLETED PROJECTS: SR 905



4

COMPLETED PROJECTS: TROLLEY BLUE LINE

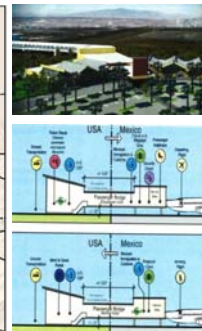
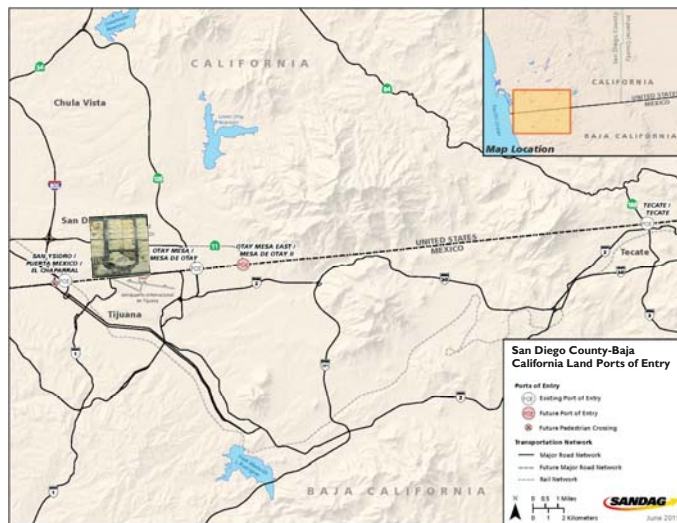


SANDAG



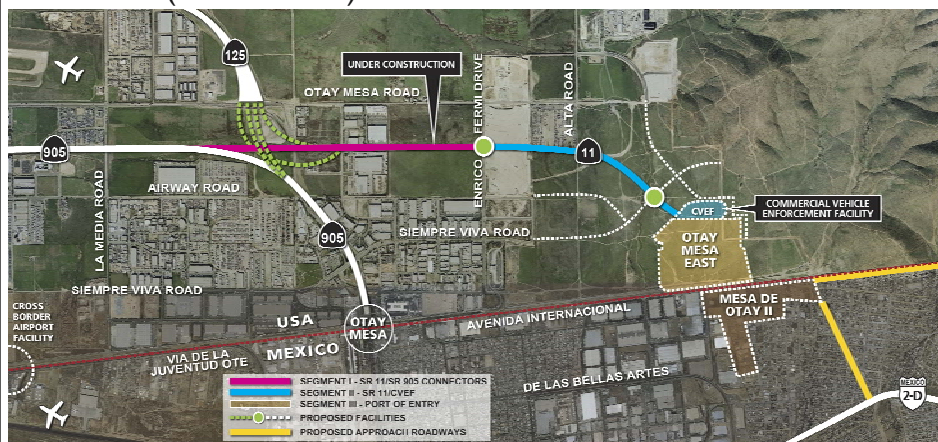
5

COMPLETED PROJECTS: CROSS BORDER XPRESS



6

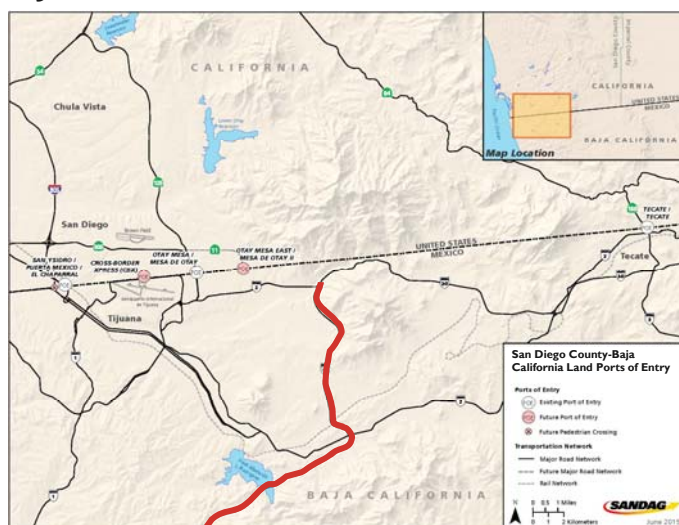
COMPLETED PROJECTS: SR 11 (SEGMENT I)



SANDAG

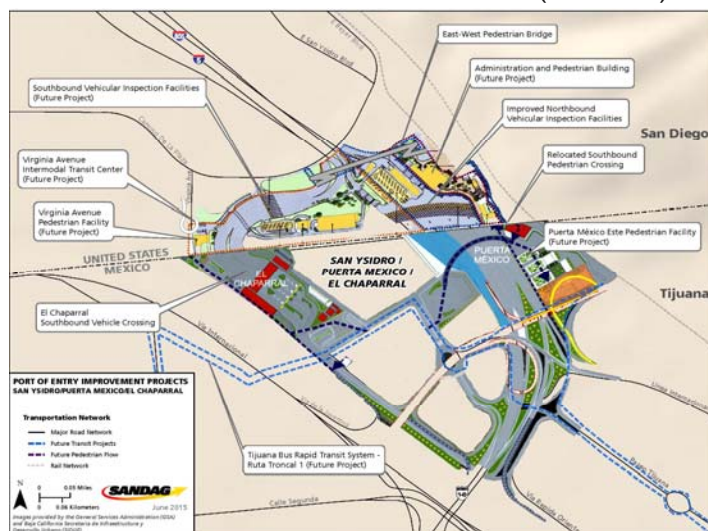
7

COMPLETED PROJECTS: CORREDOR 2000 TIJUANA-ROSARITO



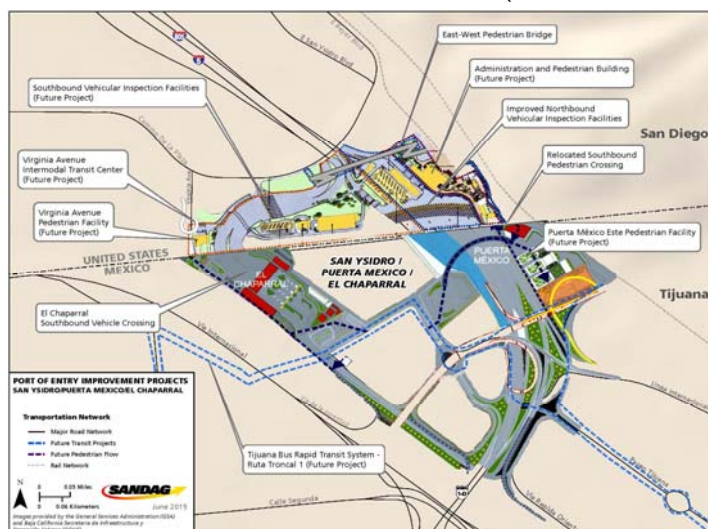
8

COMPLETED PROJECTS: SAN YSIDRO PORT OF ENTRY (PHASE I)



9

PROJECTS UNDER CONSTRUCTION: SAN YSIDRO PORT OF ENTRY (PHASES II AND III)



10

PROJECTS UNDER CONSTRUCTION: SOUTH BAY RAPID



PROJECTS UNDER DEVELOPMENT: RUTA TRONCAL

RUTA TRONCAL CORREDOR 1
FORTALECIENDO EL DESARROLLO



PROJECTS UNDER DEVELOPMENT: OTAY MESA EAST POE



**SR 11/Otay Mesa East
Port of Entry**

Expanding Binational Prosperity

Connecting Crossborder Industries

SANDAG **Caltrans**

The graphic features a blue header with a white globe icon. Below the header is a large photograph of a busy port of entry at night, with cars and trucks in lines. An inset photograph shows a white truck in a daytime setting. Below the main photo is a row of five icons: an airplane, a drone, a train, a medical symbol with a wheelchair, and a computer monitor with a smartphone. At the bottom are the SANDAG and Caltrans logos.

13

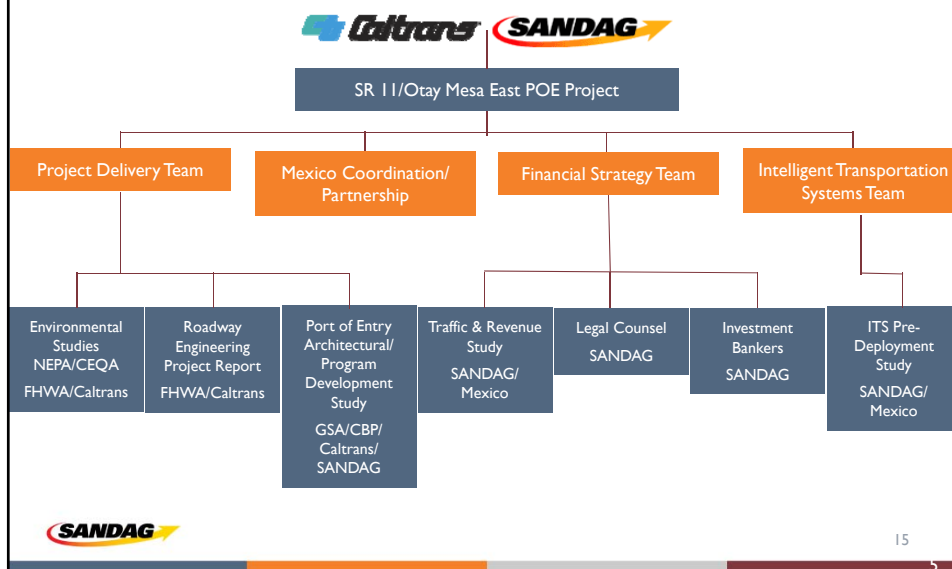
EXISTING BOTTLENECKS – NB COMMERCIAL TRAFFIC



SANDAG

14

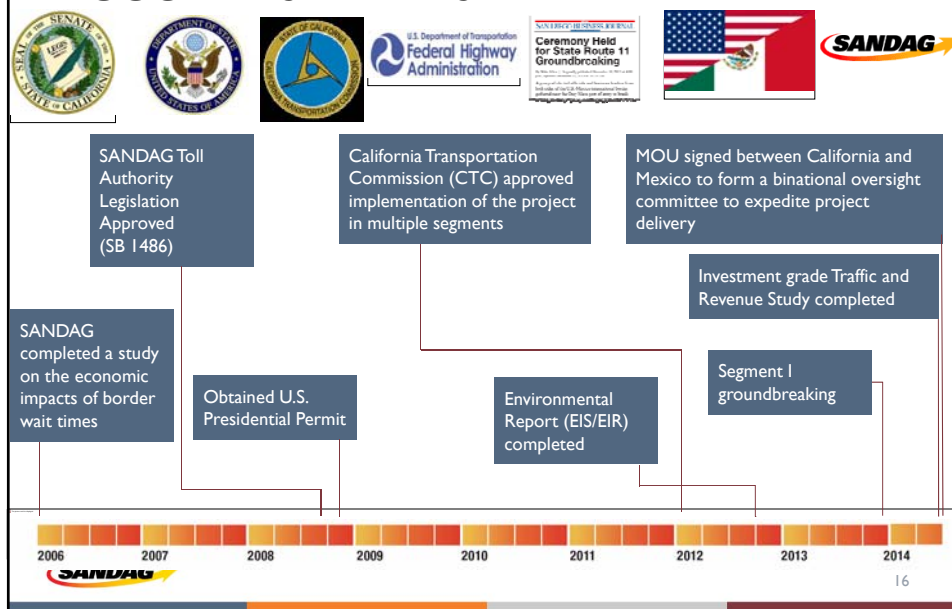
PROJECT PARTNERS: SANDAG & CALTRANS



15

5

ACCOMPLISHMENTS



16

T&R STUDY – CURRENT NORTHBOUND DELAYS

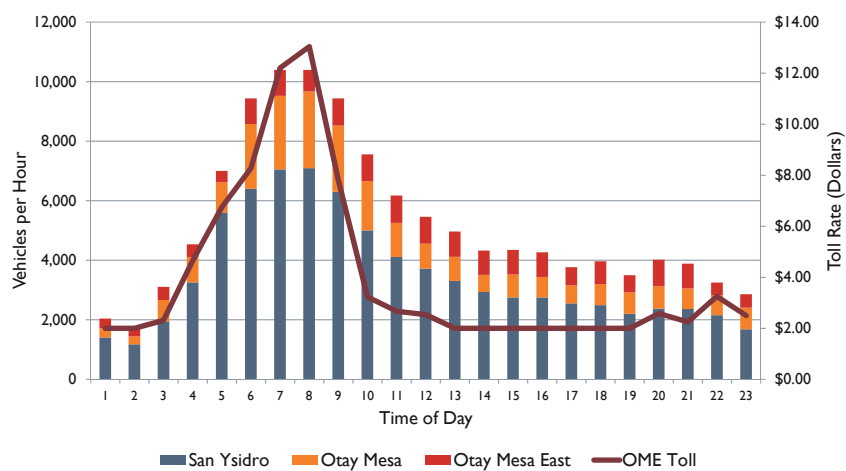
- Rising volumes cause high delays that travelers experience at the border
 - Significant delays prior to reaching inspection facilities at the POE (northbound direction)
- Surveys conducted by the study team confirm these observations

| Period | Passenger Vehicles | | Commercial Vehicles | |
|-------------|-------------------------|--------------------------|-------------------------|--------------------------|
| | Average Delay (minutes) | Range of Delay (minutes) | Average Delay (minutes) | Range of Delay (minutes) |
| Peak Period | 65 | 40 – 120 | 83 | 45 – 180 |



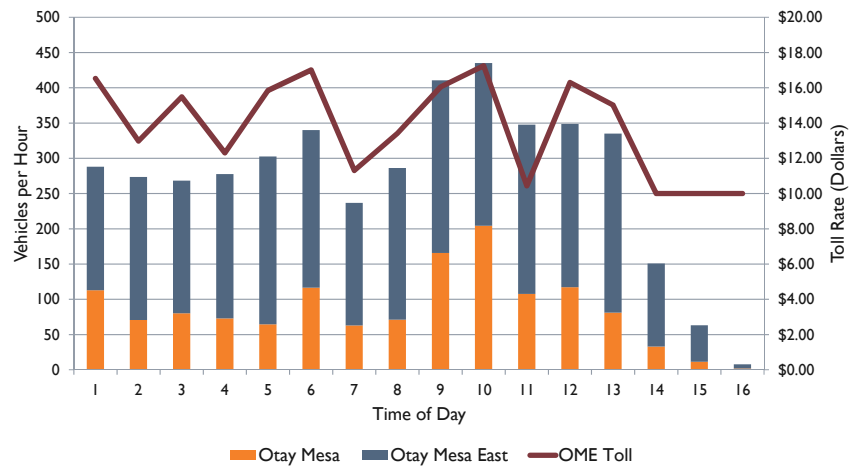
17

NB PASSENGER TRAFFIC & TOLL RATES BY TIME OF DAY 2017 (MEDIAN TOLL \$2.35)



18

NB COMMERCIAL TRAFFIC & TOLL RATES BY TIME OF DAY 2017 (MEDIAN TOLL \$15.45)

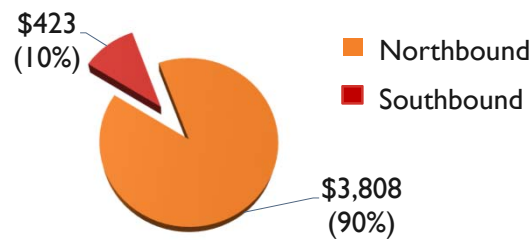


19

T&R STUDY – REVENUE FORECAST

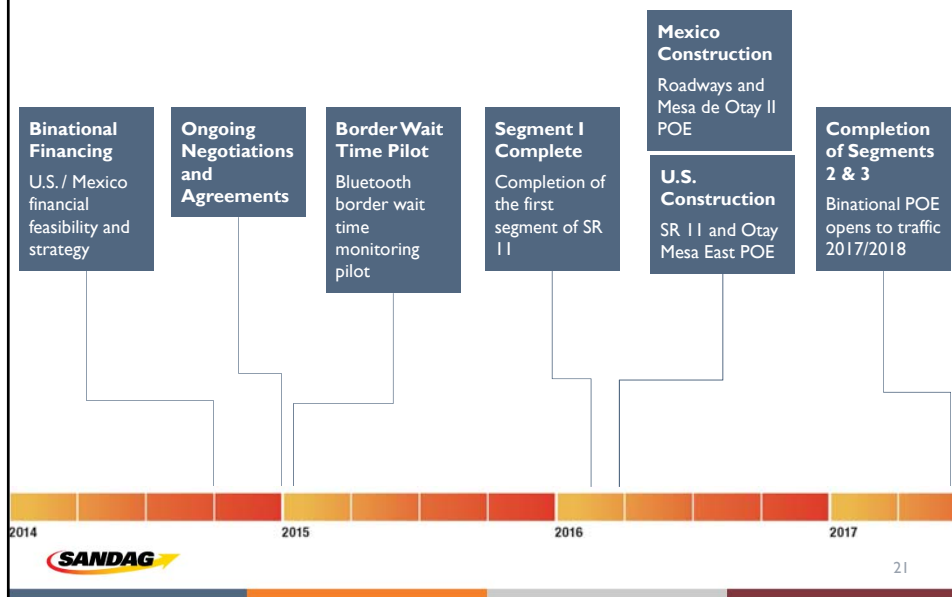
| Vehicle Type | 40-Year Revenue Estimate (in millions of 2012 dollars) |
|---------------------|---|
| Passenger Vehicles | \$ 3,225 |
| Commercial Vehicles | \$ 1,006 |
| TOTAL | \$ 4,231 |

Baseline revenue results for 40 years of operation, by direction of flow



20

THE PATH FORWARD – NEXT STEPS



HIGH LEVEL ECONOMIC DIALOGUE



THANK YOU!!

Charles “Muggs” Stoll, SANDAG

Association of Environmental Professionals
Cities in Transition – Borders in Transition Panel
April 4, 2016

