



San Luis Obispo County Department of Public Works
American Public Works Association Accredited 2014

Paso Robles Groundwater Basin

Collaborative Management Efforts

Courtney Howard, Water Resources Engineer

March 24, 2015

for the
Association of Environmental Professionals

Presentation Overview

- Groundwater Management Setting
- Current Collaborative Management Efforts
- Integration with the Sustainable Groundwater Management Act

Water, water everywhere . . .

- Conservation Programs
- Optimize Nacimientto Water Project
- Land Use Management
- Recycled Water
- Optimize State Water Project
- Groundwater Banking/Recharge
- Groundwater Supply
- Salinas Reservoir Expansion/Exchange
- Desalination
- Lopez Lake Expansion/Exchange
- Precipitation Enhancement
- New Off/On-Stream Storage/Recharge

. . . water is for fighting(?)

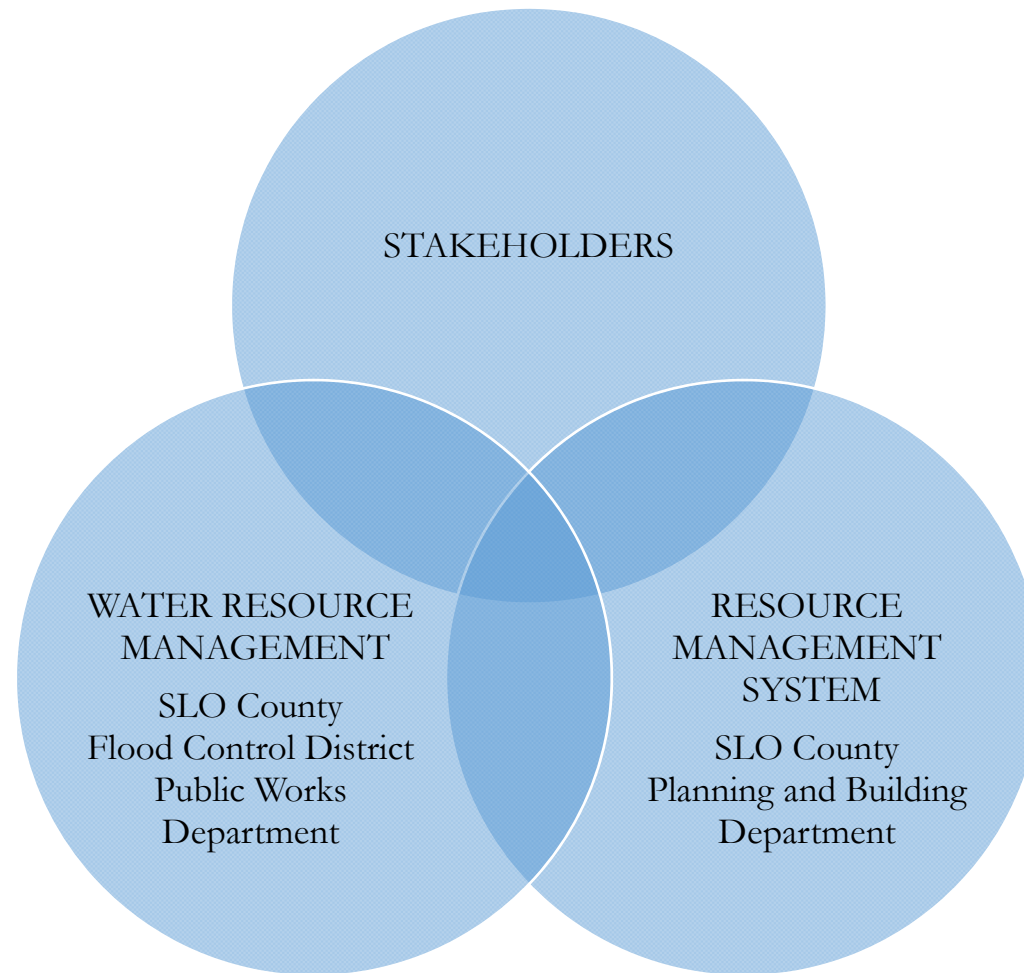
- Diversity
- Cost
- Fairness



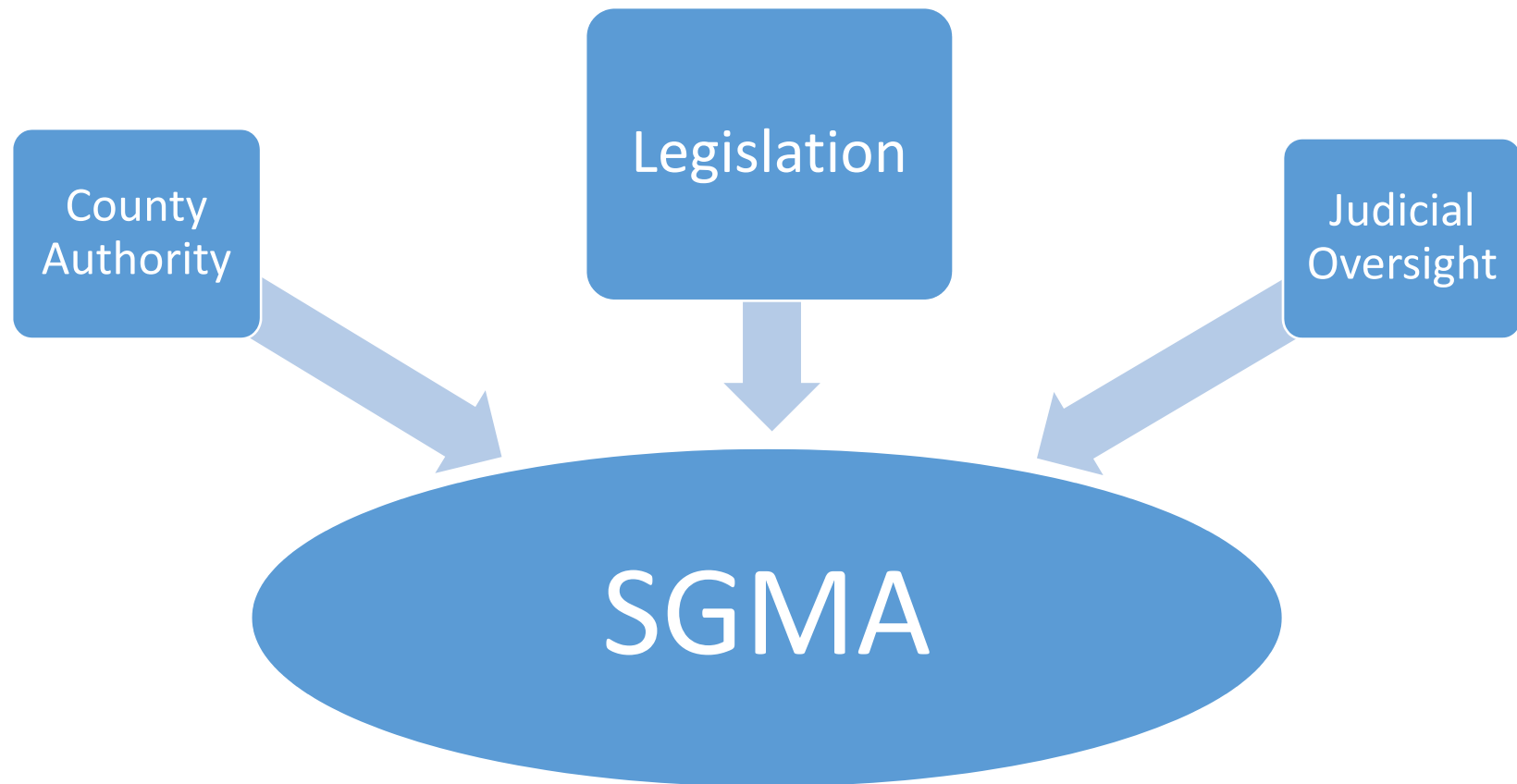
- Understanding and accepting how our demands and climate change affect water resources and management efforts

How do we meet Human and Environmental needs with a limited resource and diverse economic circumstances?

Previous Management Setting



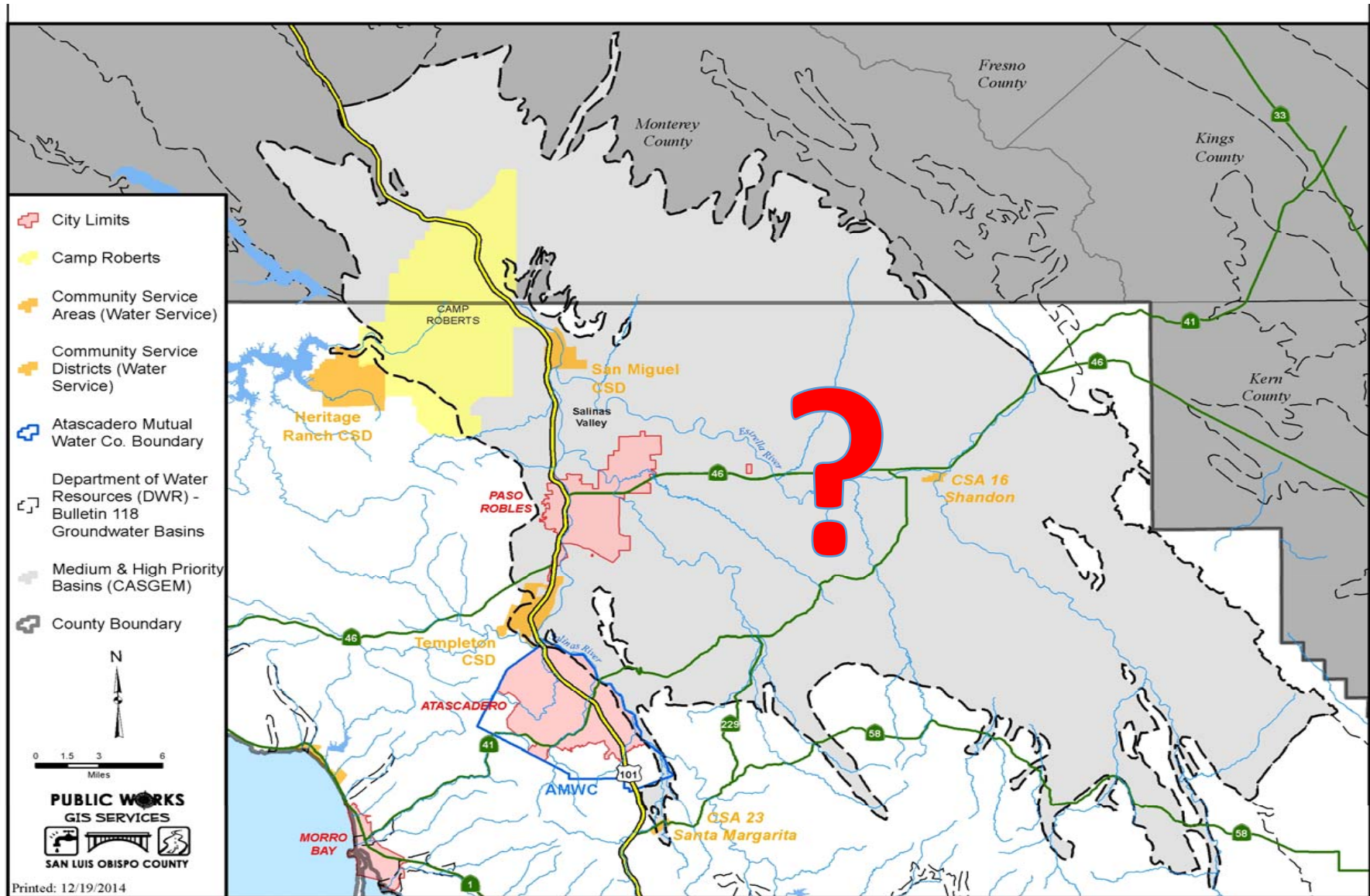
Current Management Setting



Legislation

- Transitioning to a new governance structure
- Transitioning from an AB 3030 Groundwater Management Plan to a Groundwater Sustainability Plan

Governance Structure Considerations



AB2453

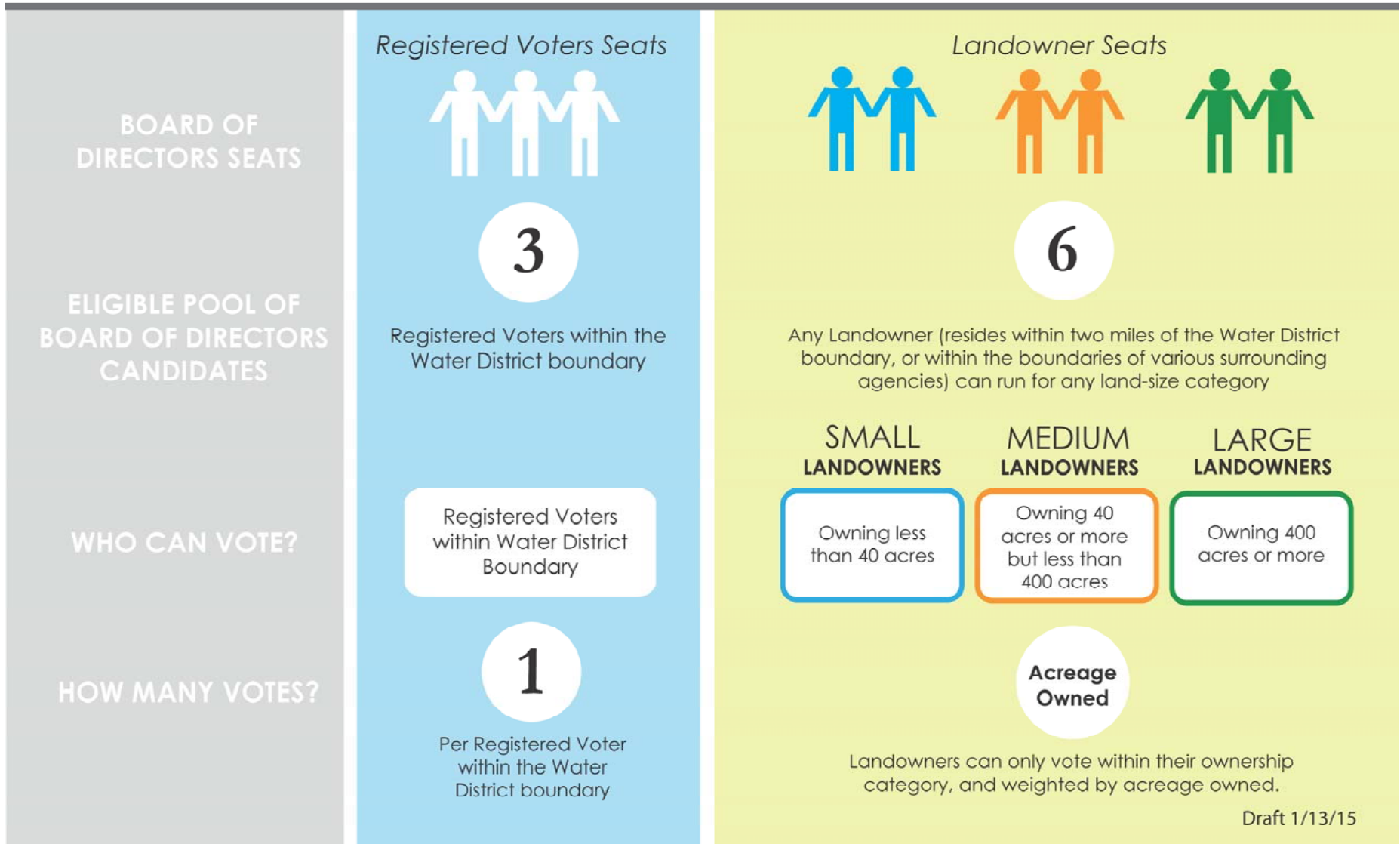
Paso Robles Basin Water District

- Provides for the formation of a new water district
- 9 member board
- Authorizes the district to develop, adopt, and implement a groundwater management plan
 - collect data
 - require conservation
 - impose extraction charges
 - establish extraction allocations
 - Implement SGMA



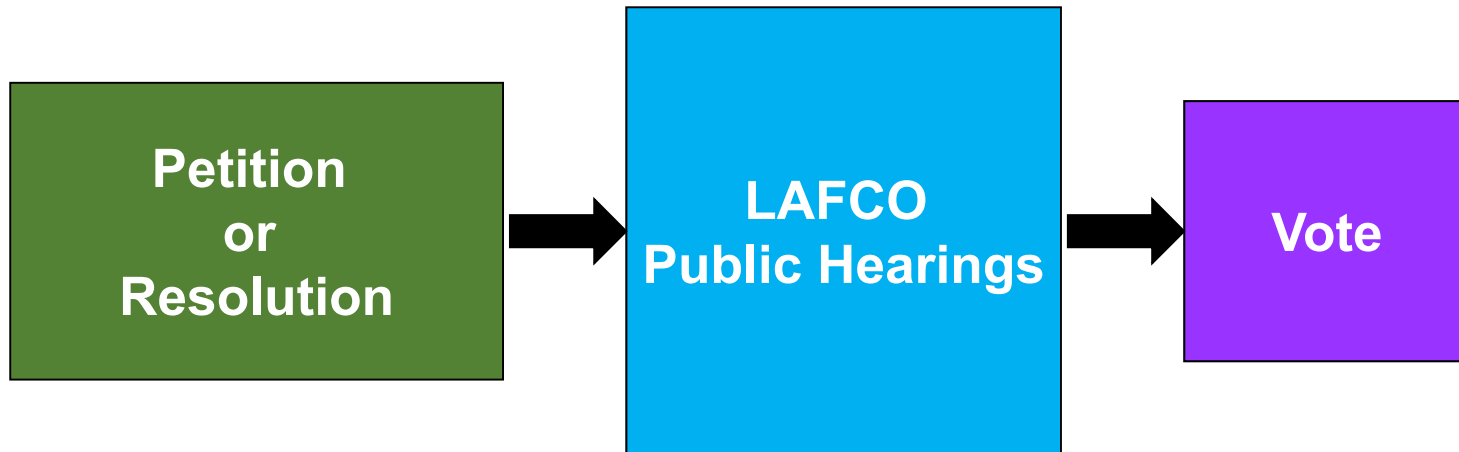
Paso Robles Basin Water District

9 Member Board of Directors Election Process



AB2453

Formation Process



AB2453

The Decisions

- Form the District?
 - One landowner, one vote
- Elect Nine Board Members
- Fund the District?

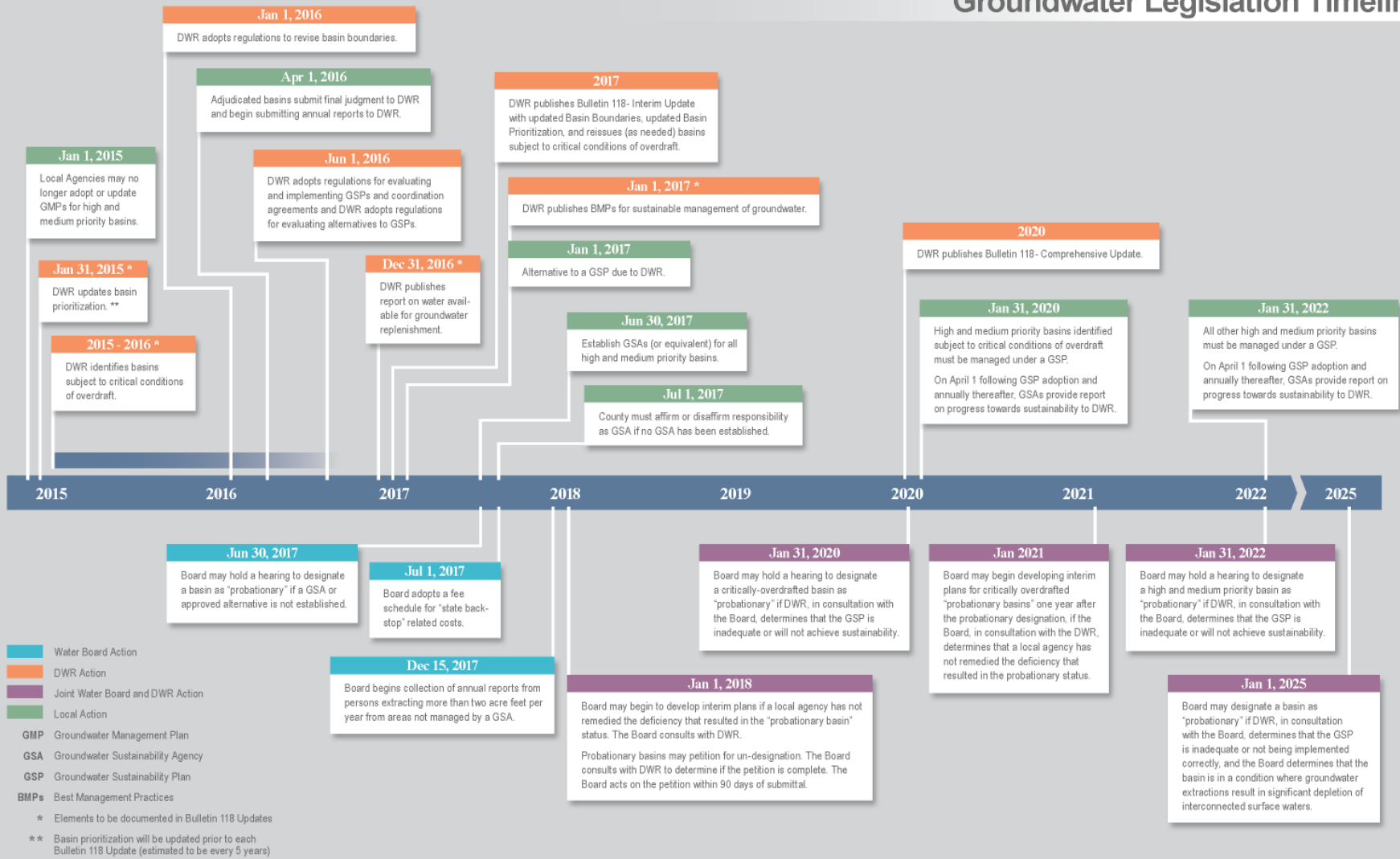
AB2453

Funding the District

- Subject to prop 218
- Assessment?
- Fee for service? (50% +1 to protest)
- Special Tax? (66 2/3 to approve)

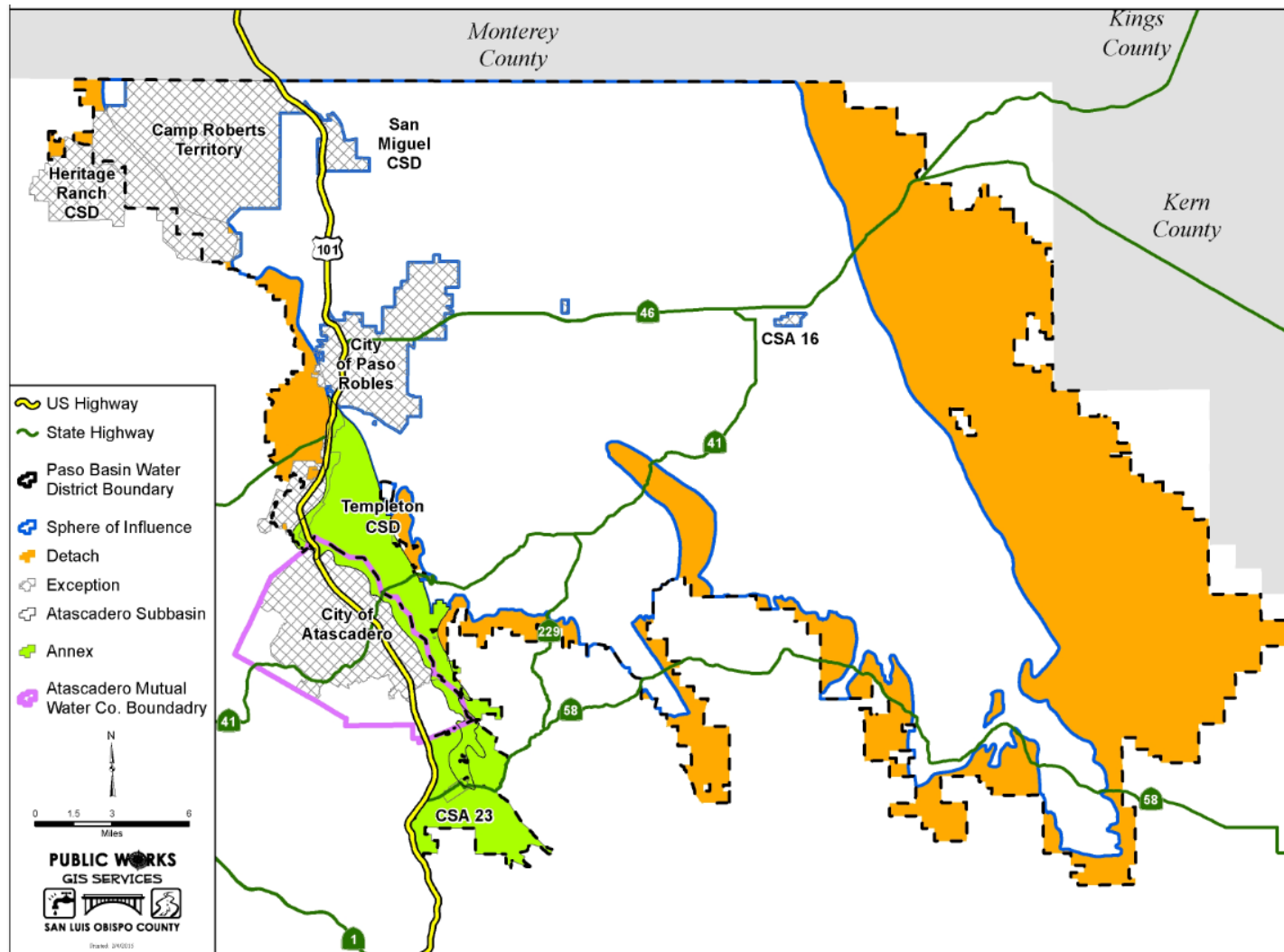
Timing Issues

Groundwater Legislation Timeline



- Water Board Action
- DWR Action
- Joint Water Board and DWR Action
- Local Action
- GMP** Groundwater Management Plan
- GSA** Groundwater Sustainability Agency
- GSP** Groundwater Sustainability Plan
- BMPs** Best Management Practices
- * Elements to be documented in Bulletin 118 Updates
- ** Basin prioritization will be updated prior to each Bulletin 118 Update (estimated to be every 5 years)

Groundwater Sustainability Agency(ies?)

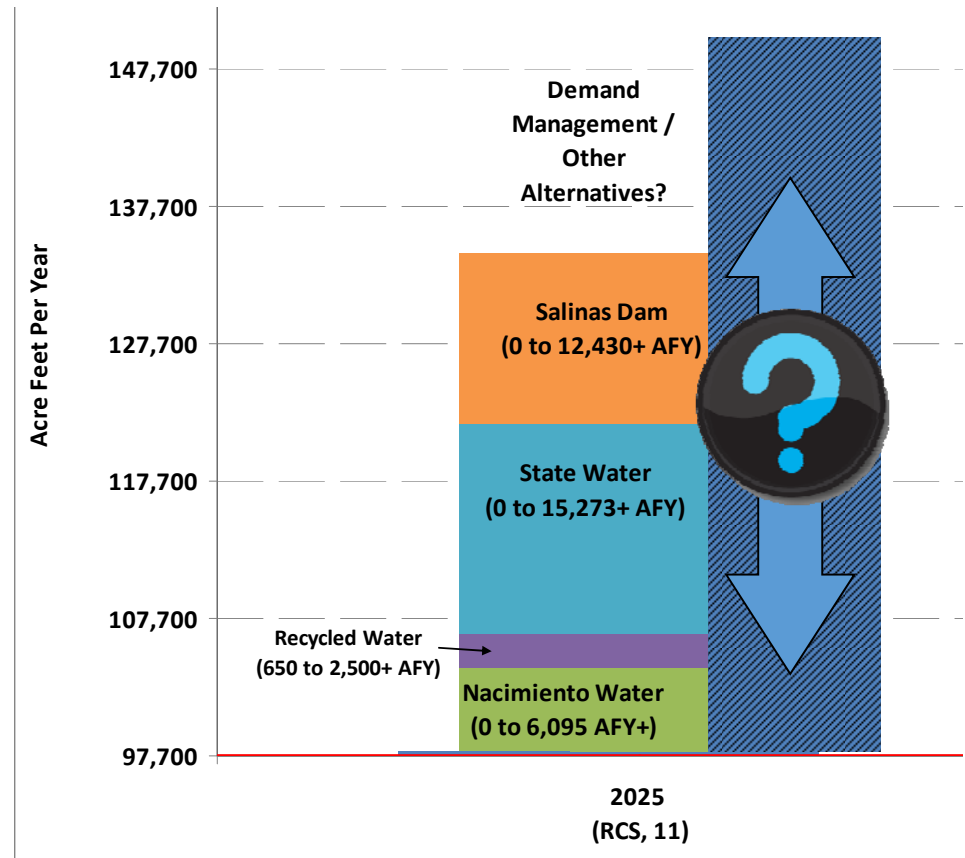
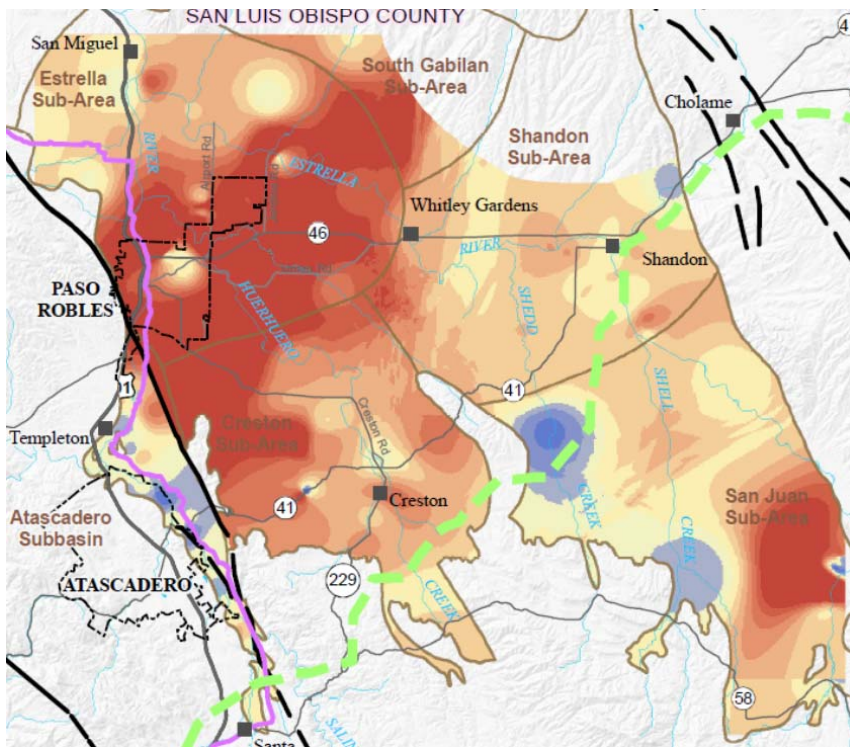


Groundwater Sustainability Plan(s?)

- AB 3030 Groundwater Management Plan
 - Monitoring Improvements
 - Computer Modeling
 - Supplemental Water Supply Options Study
 - Conservation Programs
 - Active Advisory Committee
- Integrated Regional Water Management Program
 - Salt and Nutrient Management Plan
 - Percolation Areas Study
 - Funding Opportunities
- US Bureau of Reclamation Basin Study Program
 - Salinas River Basin Study (potential)



Supplemental Supply Options





San Luis Obispo County Department of Public Works
American Public Works Association Accredited 2014



www.pasobasin.org