

# The San Gabriel Trench Project: An Overview

Association of Environmental  
Professionals Conference

March 24, 2015

John Dietler, Ph.D., RPA  
[jdietler@swca.com](mailto:jdietler@swca.com)

**SWCA**  
ENVIRONMENTAL CONSULTANTS  
Sound Science. Creative Solutions.

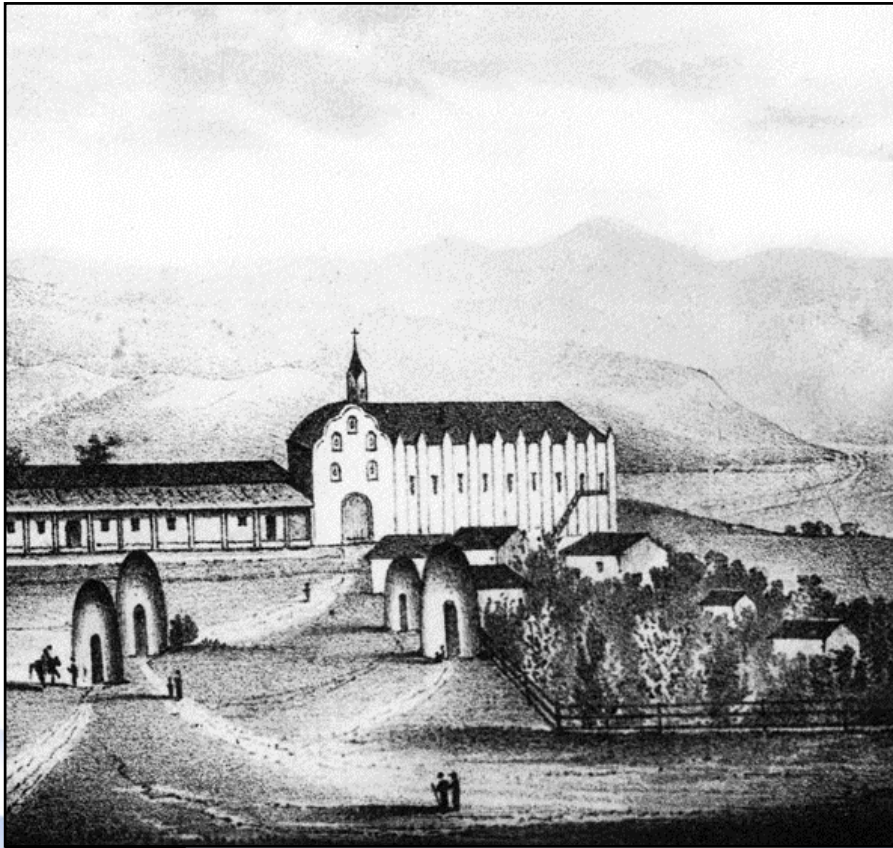




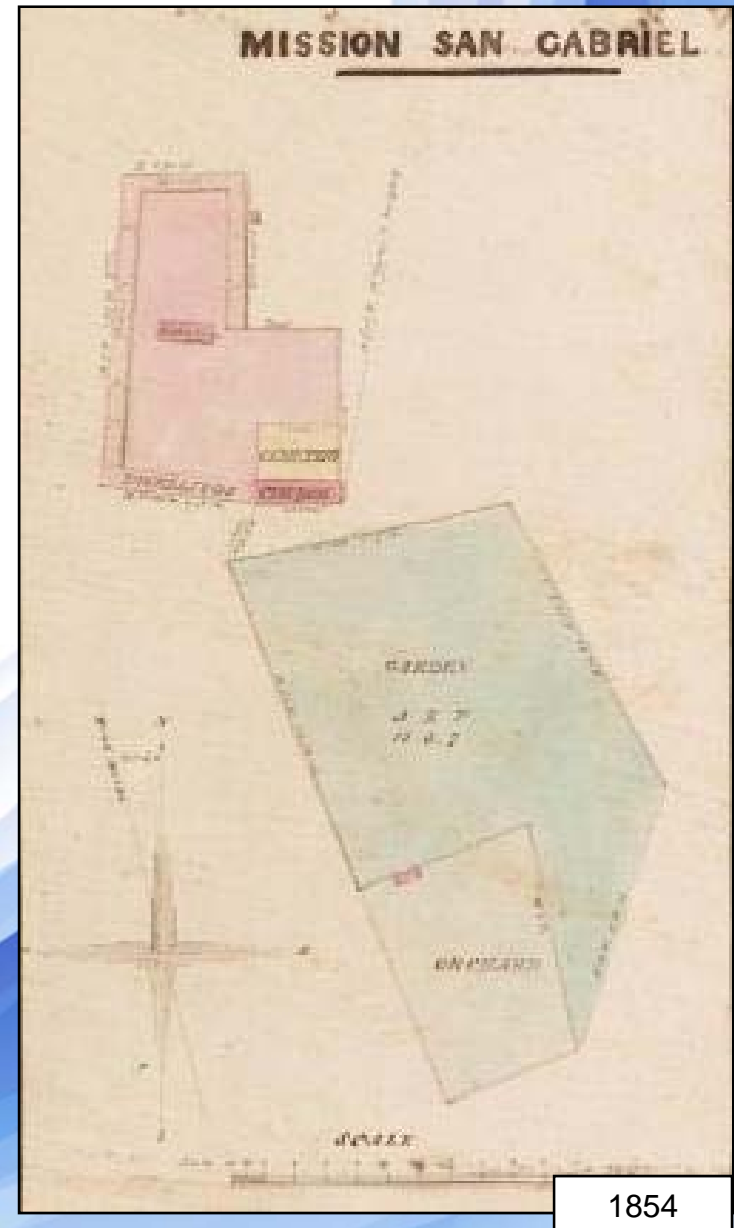
# The ACE San Gabriel Trench Project



# Mission San Gabriel



1846



1854

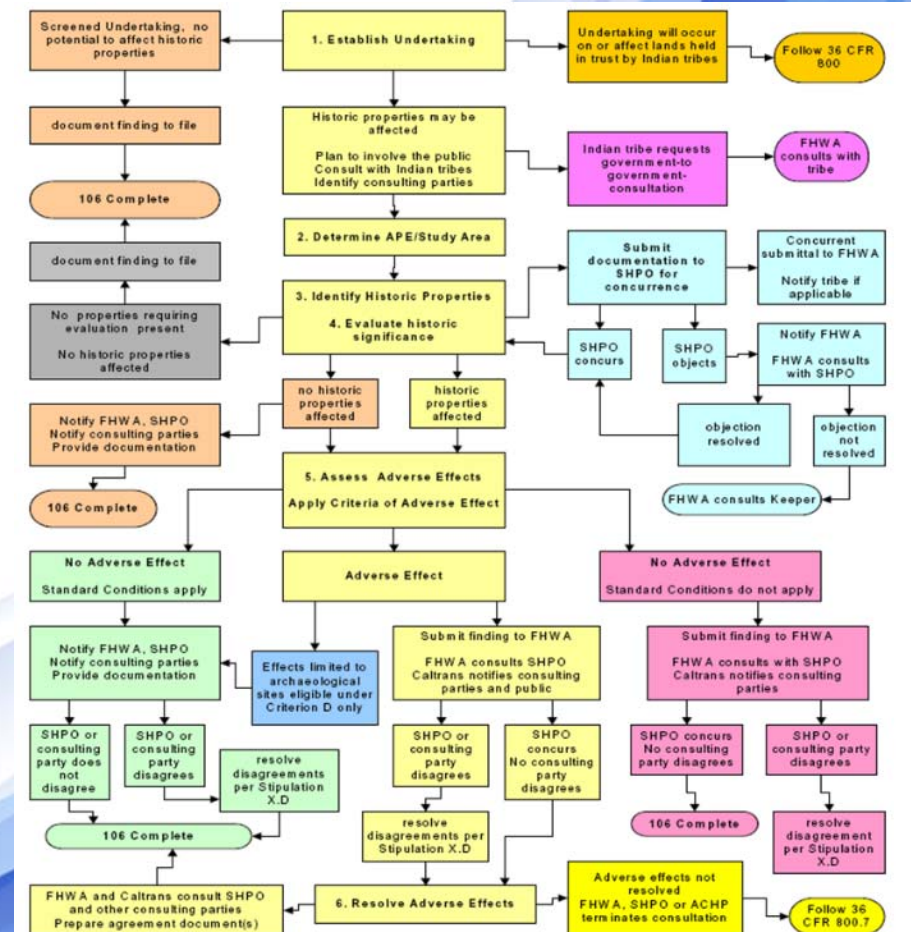


# Mission Grounds Fall Into Ruin

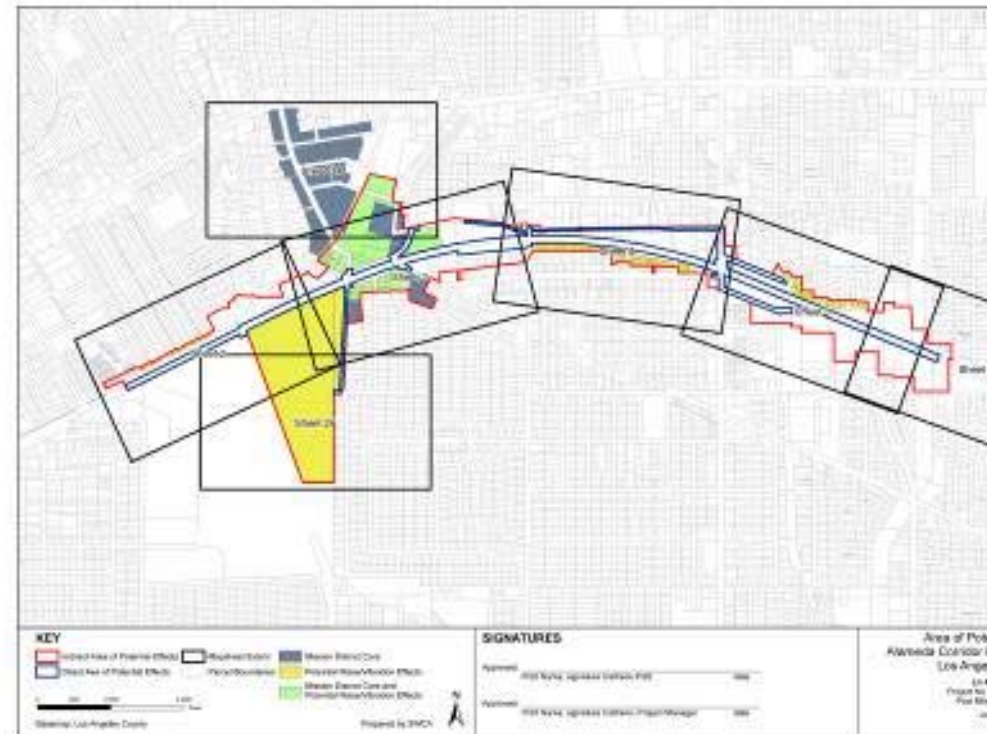


# Section 106 Compliance

1. Prepare APE Map
2. Phase I: Identify Resources
3. Phase II: Evaluate Resources
4. Finding of Effect
5. Consultation
6. Memorandum of Agreement
7. Phase III: Mitigate Effects



# Prepare APE Map





# Phase I: Identify Resources





# Extended Phase I: Delineate Site



Ground-Penetrating  
Radar Survey

Shovel Test Pits





# Phase II: Evaluation of San Gabriel Mission Site



Adobe Building  
Foundation



Chapman's  
Mill & Millrace

# Mitigation Measures in the MOA

1. Archaeological Treatment Plan
2. Construction Worker Training
3. Native American Coordination and Monitoring
4. Treatment of Human Remains
5. Relocation of Chapman's Mill and Millrace
6. Public Outreach Plan
7. Pre-Construction Survey
8. Documentation of San Gabriel Mission Arcángel
9. Noise Management and Monitoring Plan
10. Vibration Management and Monitoring Plan
11. Post-Construction Survey
12. Consideration of Effects to Setting
13. National Historic Landmark Nomination for San Gabriel Mission Arcángel
14. Continuous Vibration Monitoring
15. Repair Project-Related Damage to Historic Properties (if necessary)



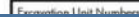
Mission Rd.

STREET NAME

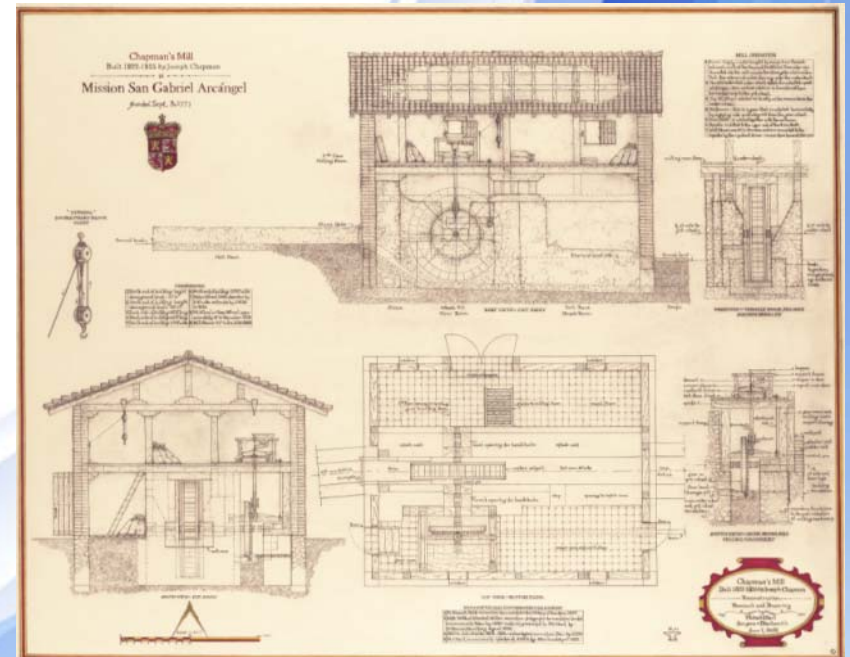
CHURCH NAME

Chapman's Millrace  
(1821)

Chapman's Mill  
(1821)



# Phase III Results: Chapman's Mill

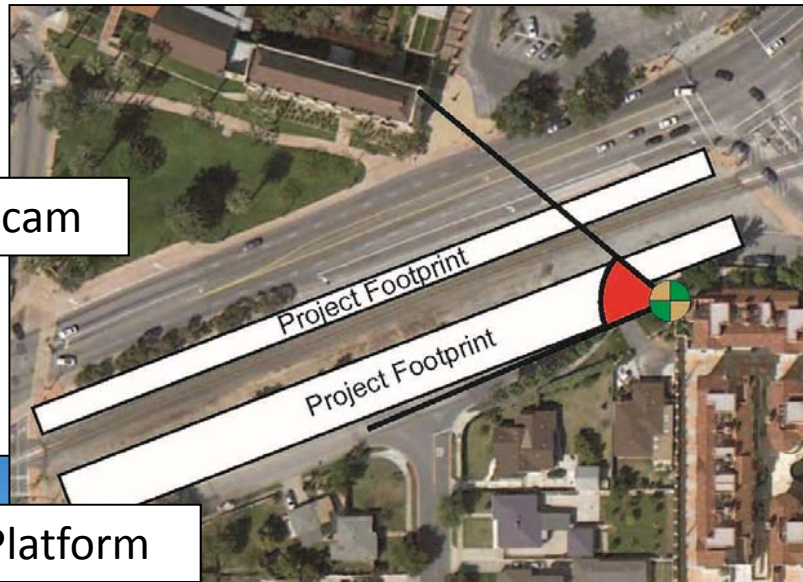


Artist's reconstruction: [www.michaeljhart.com](http://www.michaeljhart.com)



# Engaging the Public

Webcam



Brochure



Viewing Platform



Alameda Corridor-East Construction Authority  
San Gabriel Trench Grade Separation Project  
Archaeological Excavation Site

## PROJECT DESCRIPTION:

The 2.2-mile San Gabriel Trench grade separation project will result in the lowering of a 1.4-mile section of Union Pacific railroad track in a trench through the City of San Gabriel with bridges constructed at Ramona Street, Mission Road, Del Mar Avenue and San Gabriel Boulevard, a lowering vehicles and pedestrians to pass over the tracks. This project is being overseen by the Alameda Corridor-East Construction Authority (ACE) in coordination with Caltrans, the Union Pacific Railroad, and the Cities of San Gabriel, Rosemead, and Alhambra.

## ARCHAEOLOGICAL EXCAVATION:

This portion of the San Gabriel Trench Project contains artifacts and ruins related to the San Gabriel Mission, a community founded by Spanish Catholic priests and soldiers in 1771 and populated by Native Americans called the Gabrielino. Prior to construction of the trench, archaeologists are excavating the site to learn about the mission's people, industries, and environment.

For more information or questions, please call or visit:

Para información o preguntas, por favor llame al teléfono directo o visite el sitio web en:

如有疑問或需要索取工程最新資料，請致電輔助專線或查詢工程網頁

(888) ACE-1426 or [www.theaceproject.org](http://www.theaceproject.org)

Thank you for your patience and cooperation...

At ACE, it's Safety First!

## KEY FACTS:

- San Gabriel Mission was founded in 1771, and moved to this location in 1775. The stone church at this location was completed in 1801.
- The mission was built near the Gabrielino village of Shevaanga.
- This archaeological dig is at the location of the 41-acre Bishop's Garden, planted before 1783, and Chuamans Mill. The grain mill was designed by Joseph Chapman, an American, and completed in 1823.
- The mission was secularized (decommissioned) in 1834, and the Southern Pacific Railroad built their Los Angeles Division line here in 1874.
- This excavation will last for approximately three months.

Trilingual Sign







# Construction Monitoring Discoveries





Caltrans  
Alameda Corridor-East  
City of San Gabriel  
Gabrieleno/Tongva Tribal Council  
of San Gabriel  
Gabrieleno Band of Mission Indians  
- Kizh Nation

# ACKNOWLEDGEMENTS